

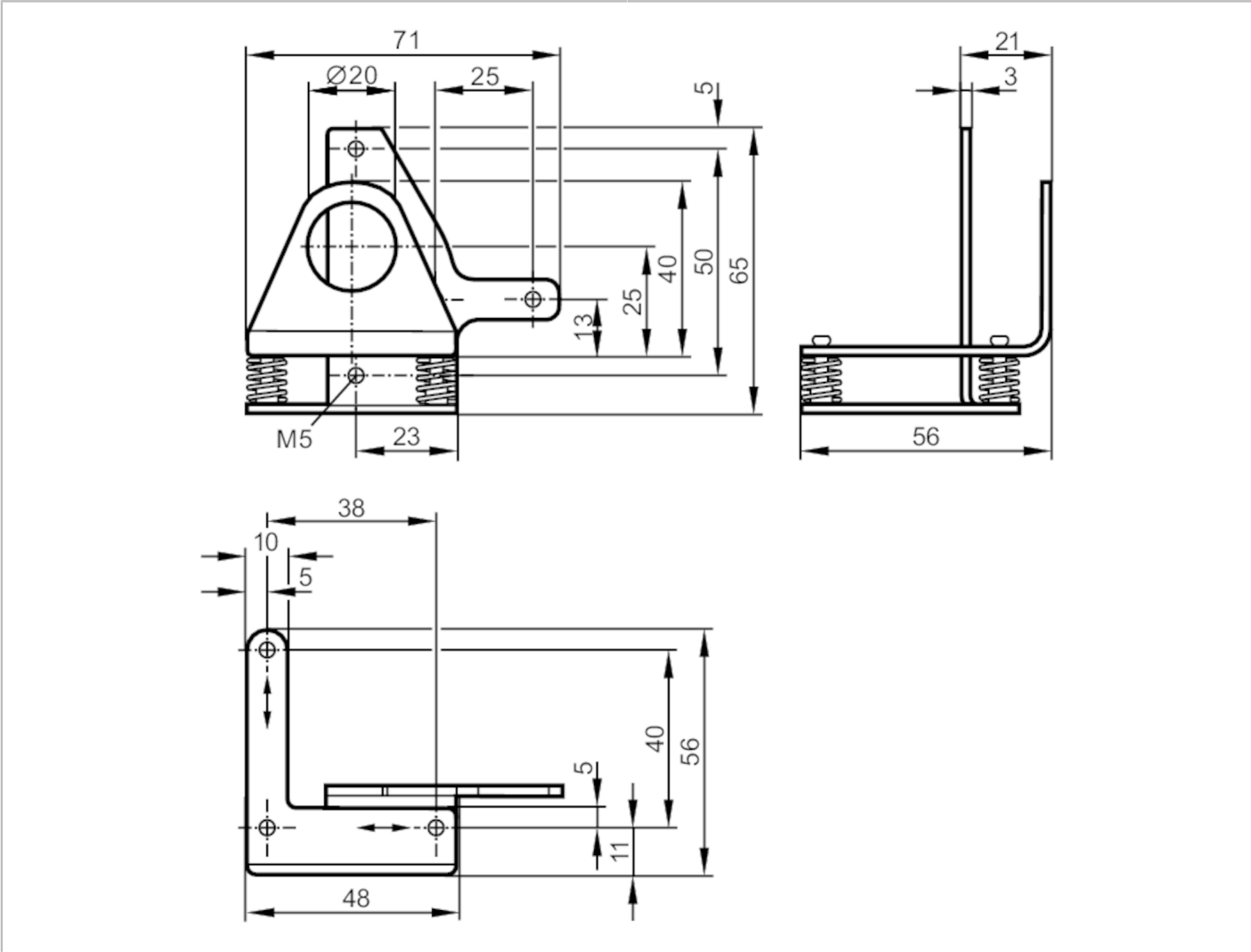
E21156



Fixture for mounting and fine adjustment of laser sensors

FINE ADJUSTMENT LASER UNIT

Article no longer available - archive entry



Application	
Design	Clamp mounting
Mechanical data	
Type of mounting	rod or free-standing depending on the clamp
Material	stainless steel (1.4571/316Ti)
Alignment range	fine adjustment in 2 axes $\pm 4^\circ$
Accessories	
Accessories (optional)	Clamp:, for rod mounting, E20795
	Clamp:, for free-standing mounting, E20796
Remarks	
Remarks	To fix O5 units M5 x 25 mm cylinder head bolts are needed.
	To fix OL units M5 x 30 mm cylinder head bolts are needed.
Pack quantity	1 pcs.