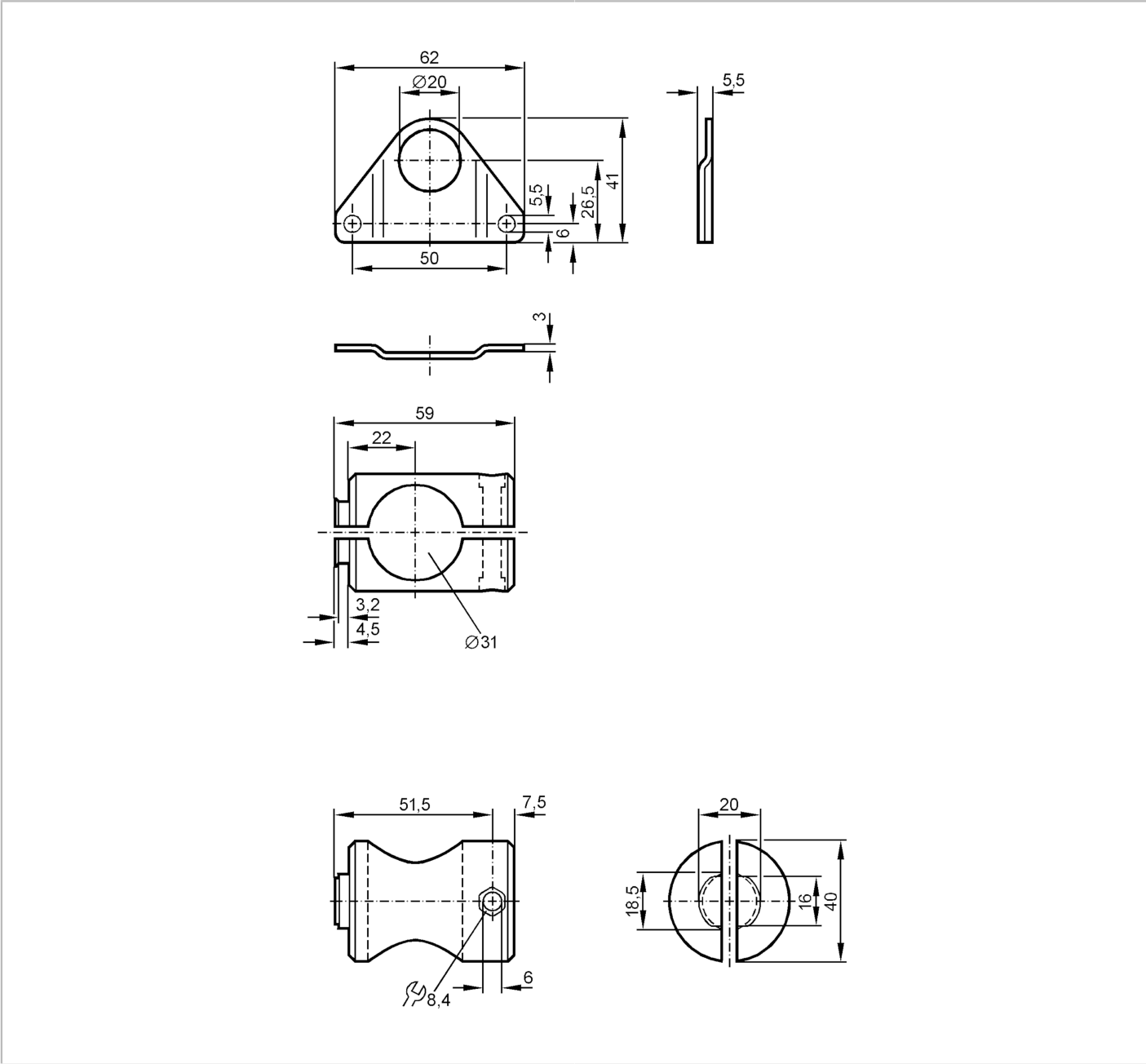




Mounting set for photoelectric sensors

MOUNTING SET OL ROD

Article no longer available - archive entry



Application	
Design	Clamp mounting
Mechanical data	
Weight [g]	176.8
Type of mounting	Mounting rod; (Ø 30 mm)
Material	fixture: stainless steel (1.4571/316Ti); Clamp: aluminum transparent anodized
Remarks	
Pack quantity	1 pcs.