

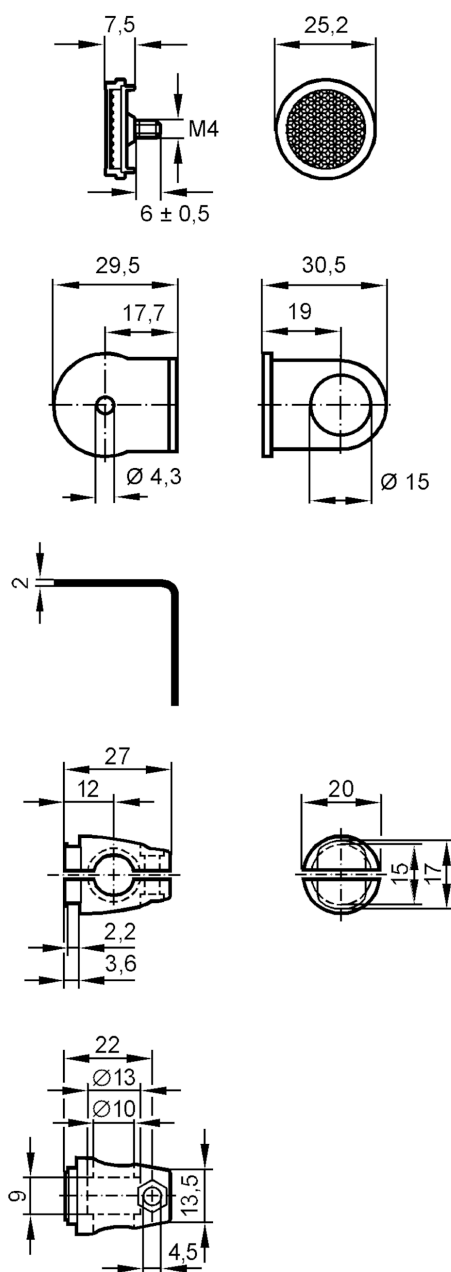
E21000



Mounting set for reflectors

SYSTEM COMPONENT REFLECTOR

Article no longer available - archive entry



Application

Design

Clamp mounting, for reflector

Mechanical data

Weight

[g]

97.6

Type of mounting

free-standing; (M8)

Material

fixture: stainless steel (1.4571/316Ti); Clamp: stainless steel (1.4408)

Accessories

Items supplied

screw: 1 x M8 x 40

Remarks

Pack quantity

1 pcs.