

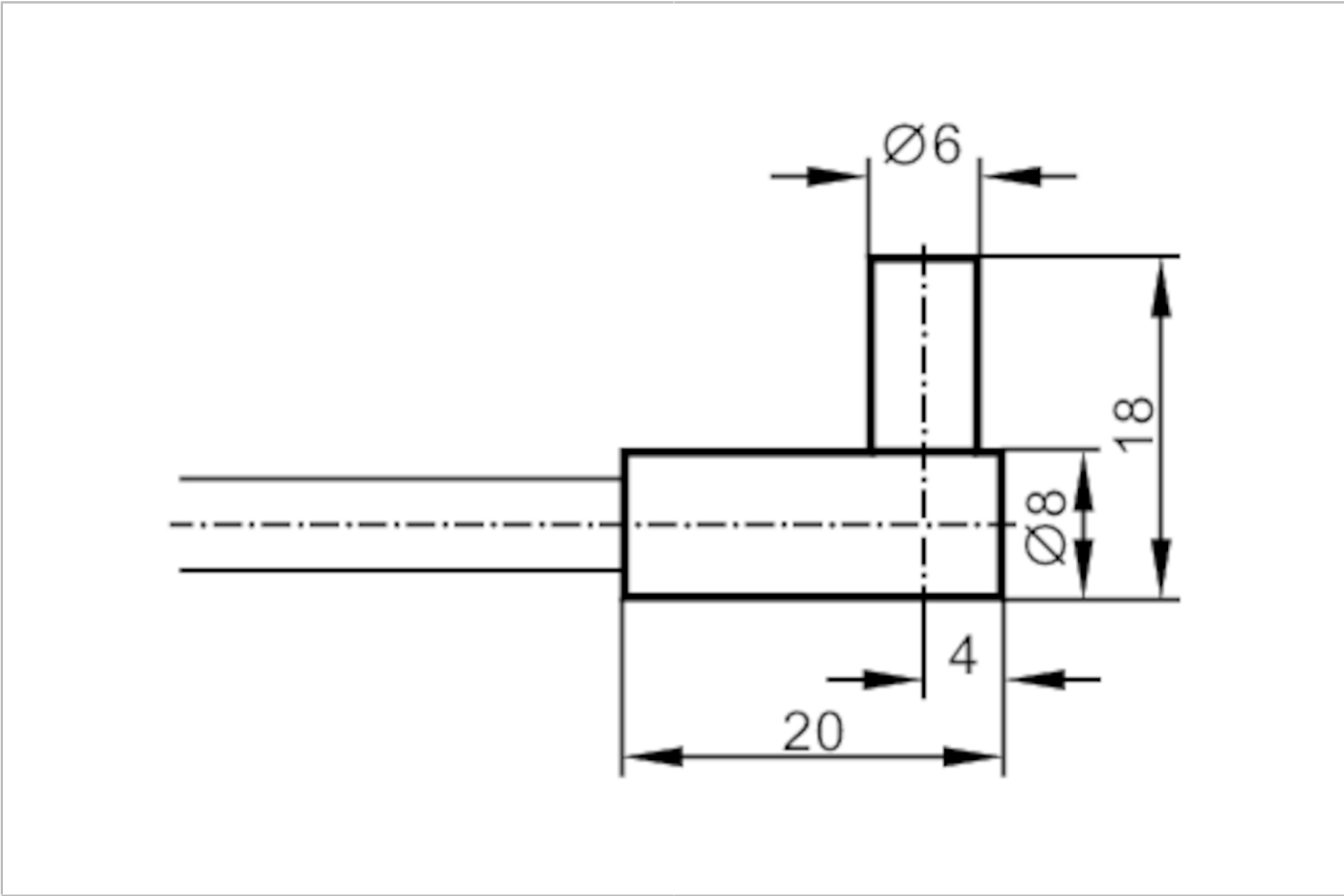


Fiber optic through beam sensor

FE-30-P-A-R6/1M

Article no longer available - archive entry

Alternative articles: E20581
When selecting an alternative article and accessories please note that technical data may differ!



| Application | |
|---------------------------------------|---------------------|
| Function principle | Through-beam sensor |
| Monitoring range | |
| Range with fiber optic amplifier type | OIF |
| OIF | |
| Range of fiber optics [mm] | 300 |
| Operating conditions | |
| Ambient temperature [°C] | -20...80 |
| Mechanical data | |
| Version of sensing head | angled |
| Total length [mm] | 1000 |
| Min. bending radius [mm] | 30 |
| Material | Adapter: PA |
| Fiber material | glass |
| Fiber head material | aluminum |
| Fiber sheath material | PVC |

E20329



Fiber optic through beam sensor

FE-30-P-A-R6/1M

| Remarks | |
|---------------|--------|
| Pack quantity | 1 pcs. |