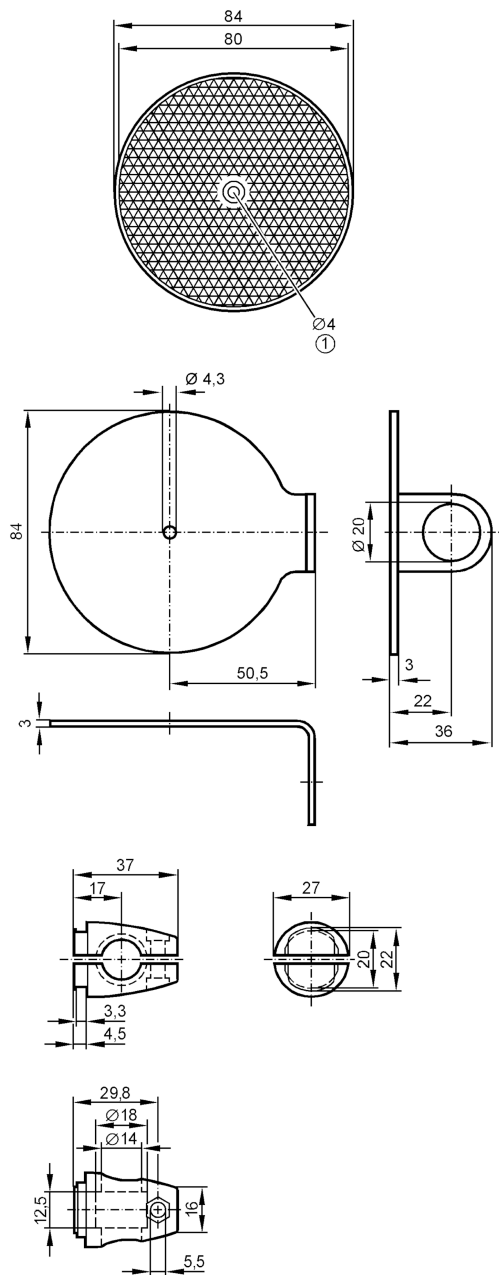


E20996



Mounting set for reflectors

SYSTEM COMPONENT REFLECTOR



1 screw head Ø 7.5 mm

Application

Design Clamp mounting, for reflector

Mechanical data

Weight [g] 434
Type of mounting free-standing; (M12)
Material fixture: stainless steel (1.4571/316Ti); Clamp: stainless steel (1.4408)

Accessories

Items supplied screw: 1 x M12 x 120

Remarks

Pack quantity 1 pcs.