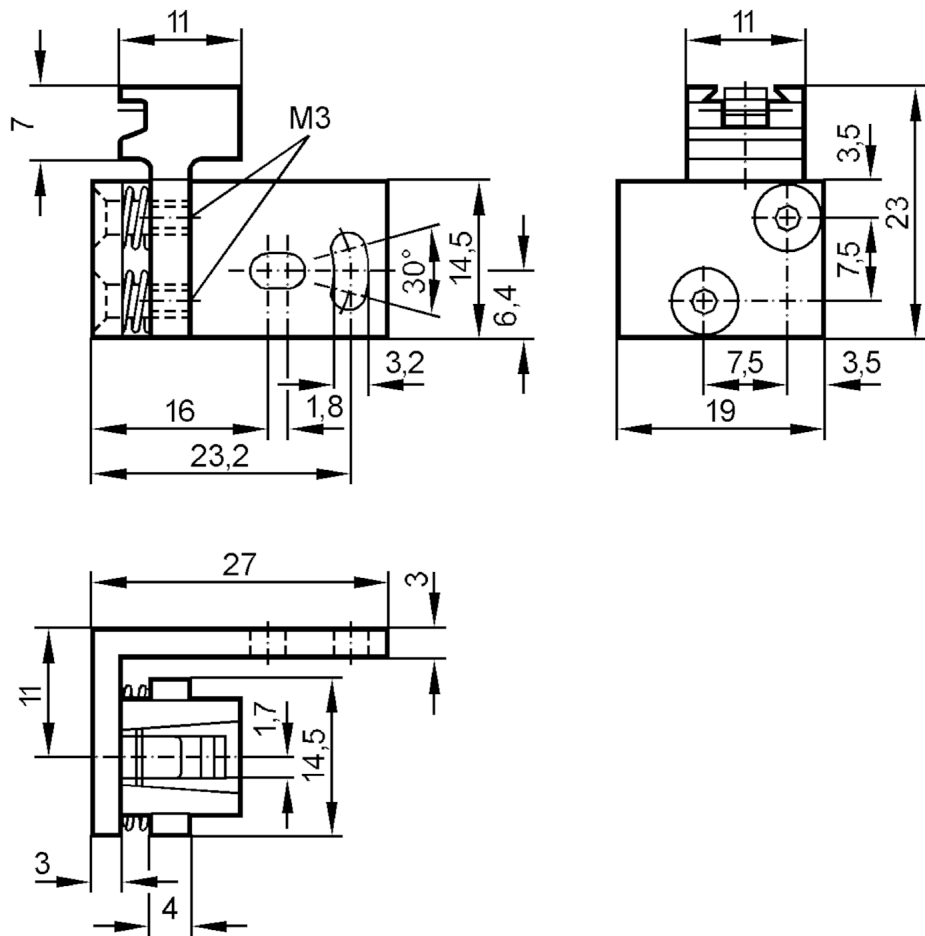


E20976



Fixture for mounting and fine adjustment of laser sensors

SYSTEM COMPONENT OJ LASER



Application

Design

for side lens

Mechanical data

Weight

[g]

35.5

Material

diecast zinc

Alignment range

fine adjustment in 2 axes $\pm 2^\circ$

Remarks

Pack quantity

1 pcs.