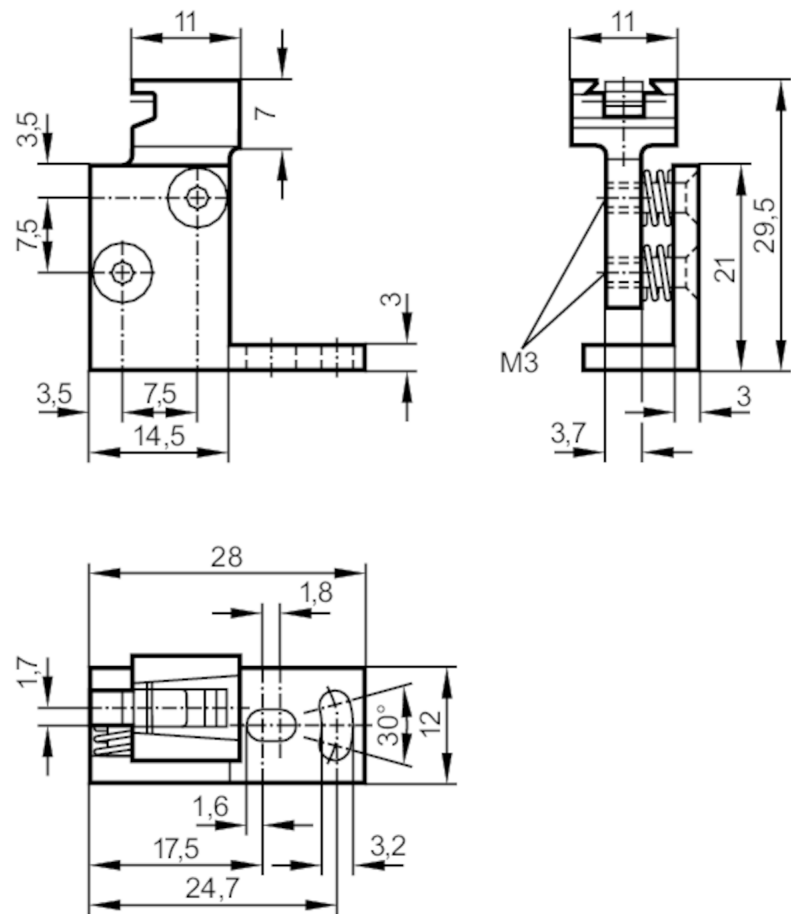


E20975



Fixture for mounting and fine adjustment of laser sensors

SYSTEM COMPONENT OJ LASER



Application

Design

for front lens

Mechanical data

Weight [g]

35.5

Dimensions [mm]

29.5 x 12 x 28

Material

diecast zinc

Alignment range

fine adjustment in 2 axes $\pm 2^\circ$

Remarks

Pack quantity

1 pcs.