



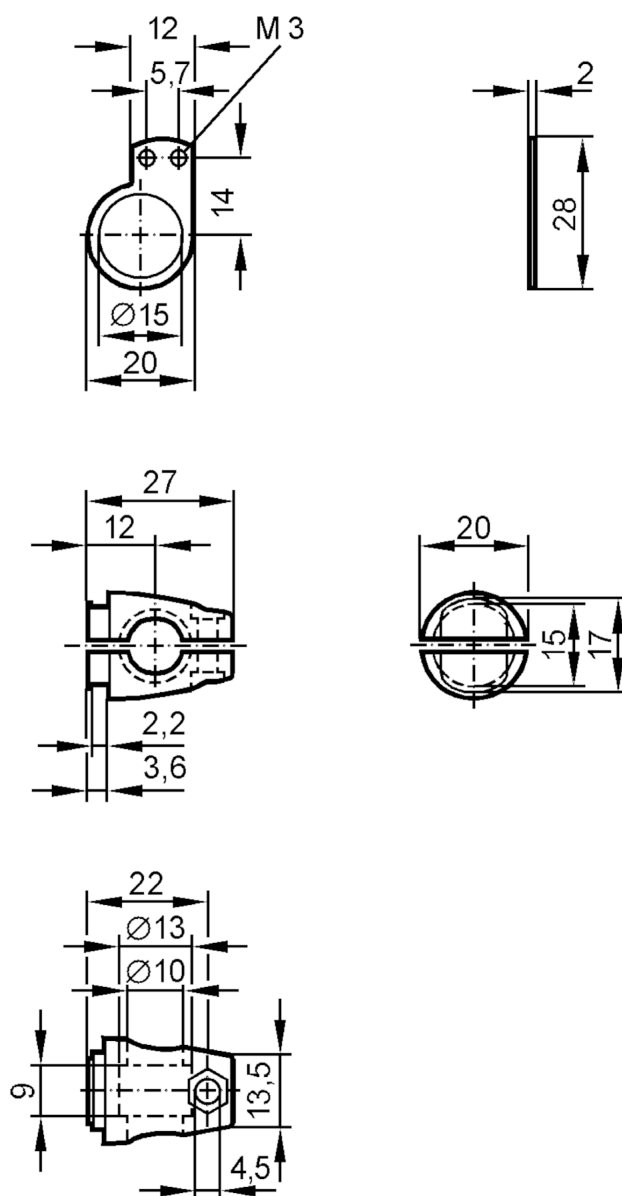
## Mounting set for photoelectric sensors

SYSTEM COMPONENT OJ ROD

Article no longer available - archive entry

Alternative articles: E20966

When selecting an alternative article and accessories please note that technical data may differ!



## Application

Design

Clamp mounting, for side lens

## Mechanical data

Type of mounting

Mounting rod; ( $\varnothing$  10 mm)

Material

fixture: stainless steel (1.4571/316Ti ); Clamp: diecast zinc

## Remarks

Pack quantity

1 pcs.