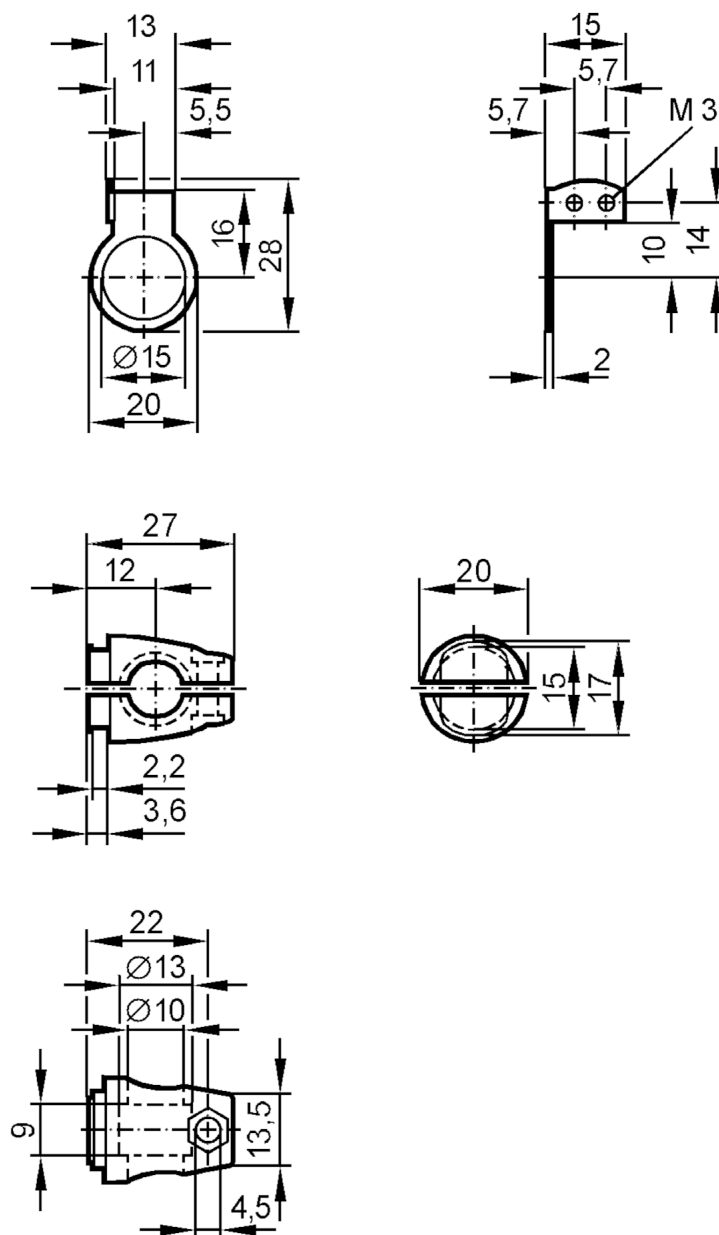


Mounting set for photoelectric sensors

SYSTEM COMPONENT OJ ROD

Article no longer available - archive entry



Application

Design

Clamp mounting, for front lens

Mechanical data

Type of mounting

Mounting rod; ($\varnothing 10$ mm)

Material

fixture: stainless steel (1.4571/316Ti); Clamp: stainless steel (1.4408)

Remarks

Pack quantity

1 pcs.