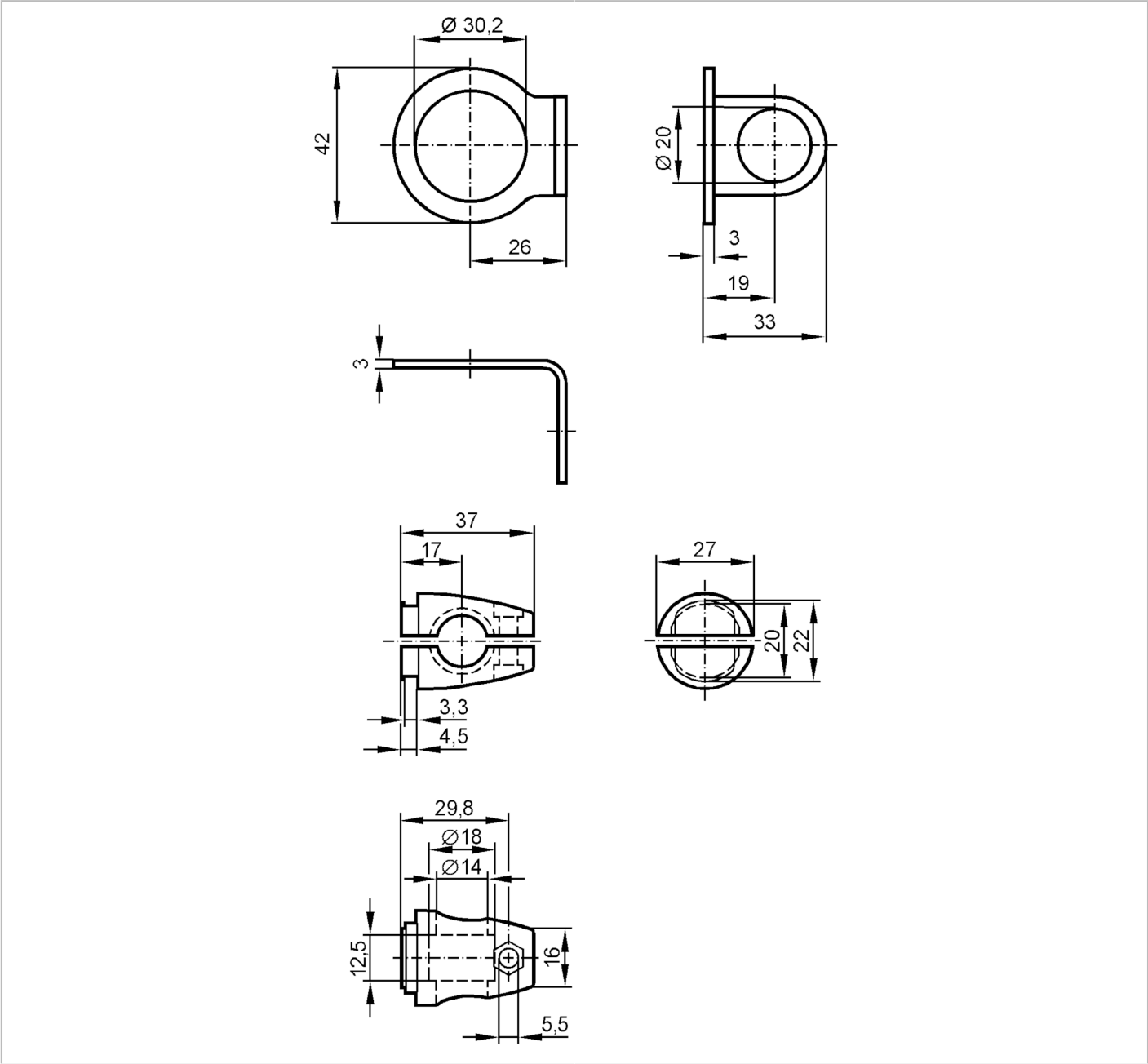




Mounting set for position sensors

SYSTEM COMPONENT M30 ROD

Article no longer available - archive entry



Application	
Design	Clamp mounting
Mechanical data	
Type of mounting	Mounting rod; ($\varnothing 14$ mm)
Dimensions [mm]	$\varnothing 30.2$
Material	fixture: stainless steel (1.4571/316Ti); Clamp: diecast zinc
Remarks	
Pack quantity	1 pcs.