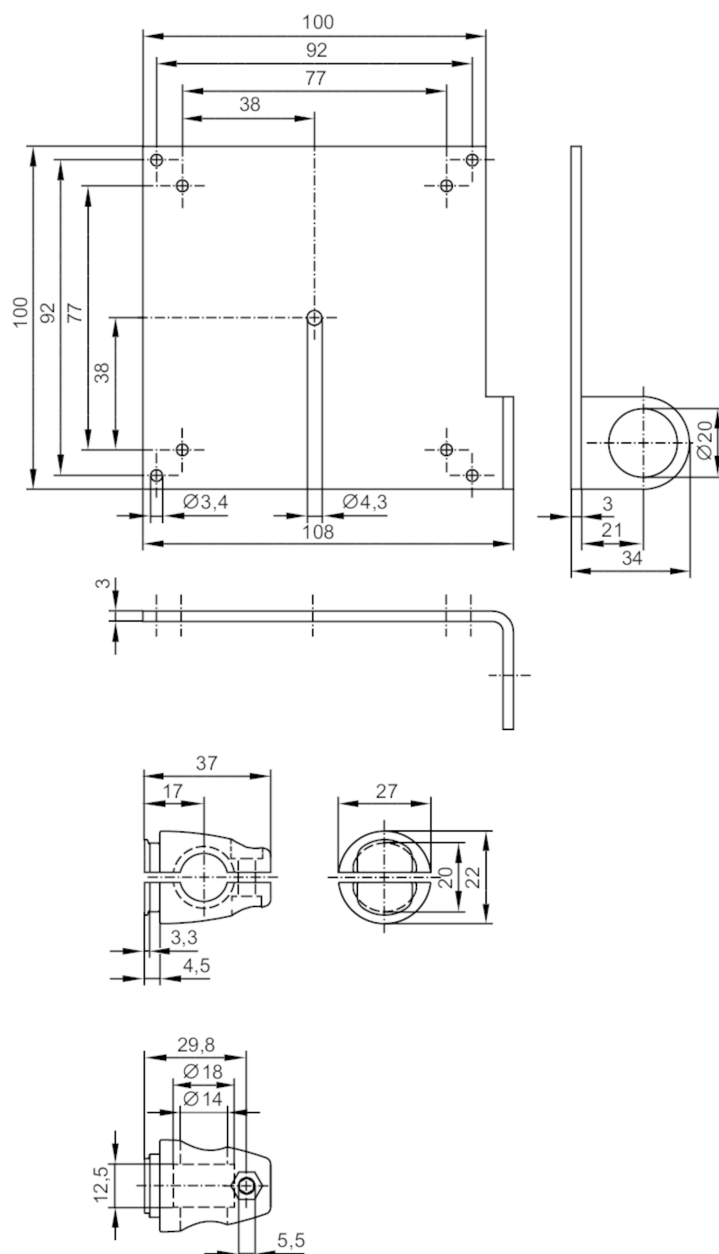


# E20935



## Mounting set for reflectors

SYSTEM COMPONENT REFL BOLT



## Application

## Design

Clamp mounting, for reflector, 100 x 100 mm

## Mechanical data

Weight

[g]

510

Type of mounting

free-standing; (M12)

## Material

fixture: stainless steel (1.4571/316Ti ); Clamp: stainless steel (1.4408)

## Accessories

Items supplied

screw: 1 x M12 x 120

## Remarks

Pack quantity

1 pcs.