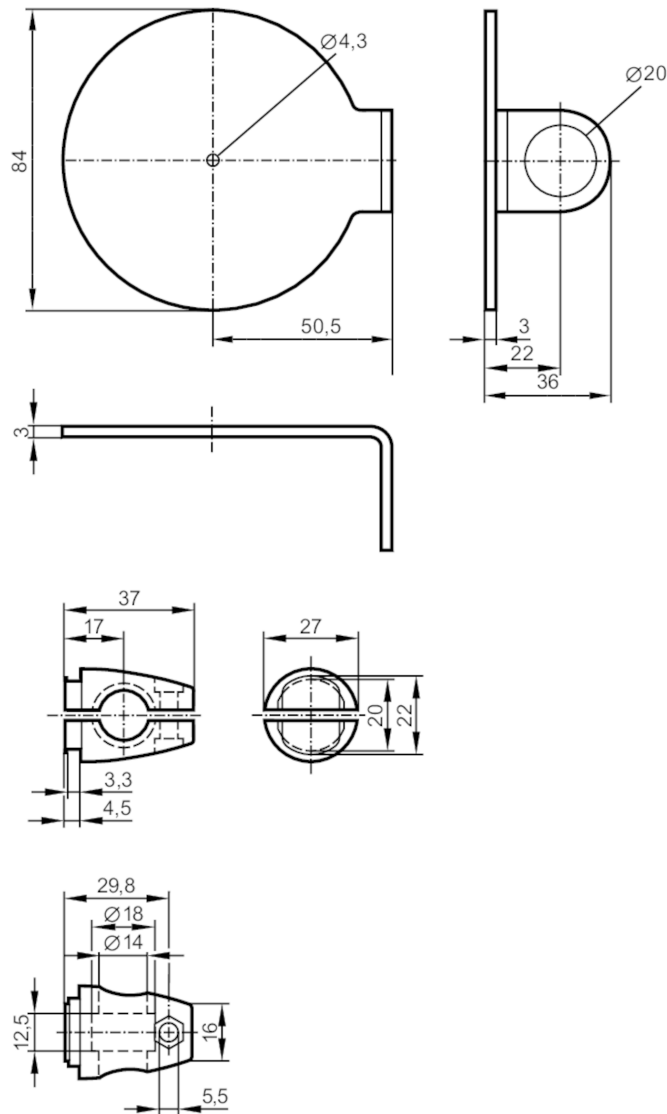


# E20915



## Mounting set for reflectors

SYSTEM COMPONENT REFL BOLT



### Application

Design

Clamp mounting, for reflector, Ø 80 mm

### Mechanical data

Weight

[g]

401

Type of mounting

free-standing; (M12)

Material

fixture: stainless steel (1.4571/316Ti ); Clamp: stainless steel (1.4408)

### Accessories

Items supplied

screw: 1 x M12 x 120

screw: 1 x M4 x 12

screw: 1 x M5 x 16

### Remarks

Pack quantity

1 pcs.