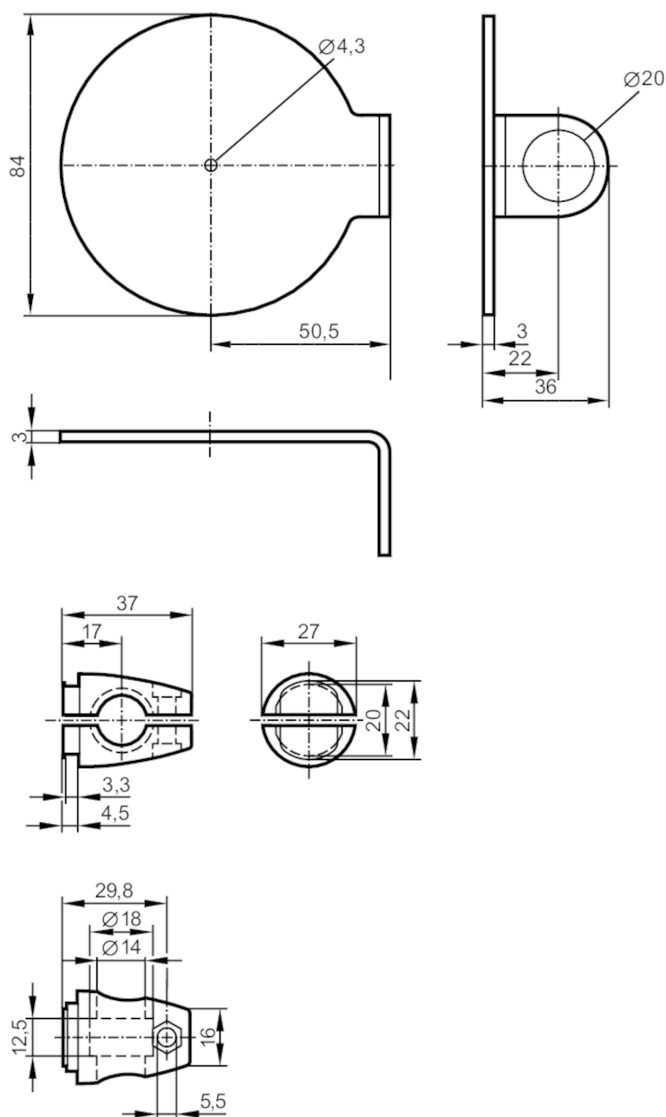


E20914



Mounting set for reflectors

SYSTEM COMPONENT REFL BOLT



Application

Design	Clamp mounting, for reflector, Ø 80 mm
--------	--

Mechanical data

Weight	[g]	389.2
Type of mounting		free-standing; (M12)
Material		fixture: stainless steel (1.4571/316Ti); Clamp: diecast zinc

Accessories

Items supplied	screw: 1 x M12 x 120
	screw: 1 x M4 x 12
	screw: 1 x M5 x 16

Remarks

Pack quantity	1 pcs.
---------------	--------