

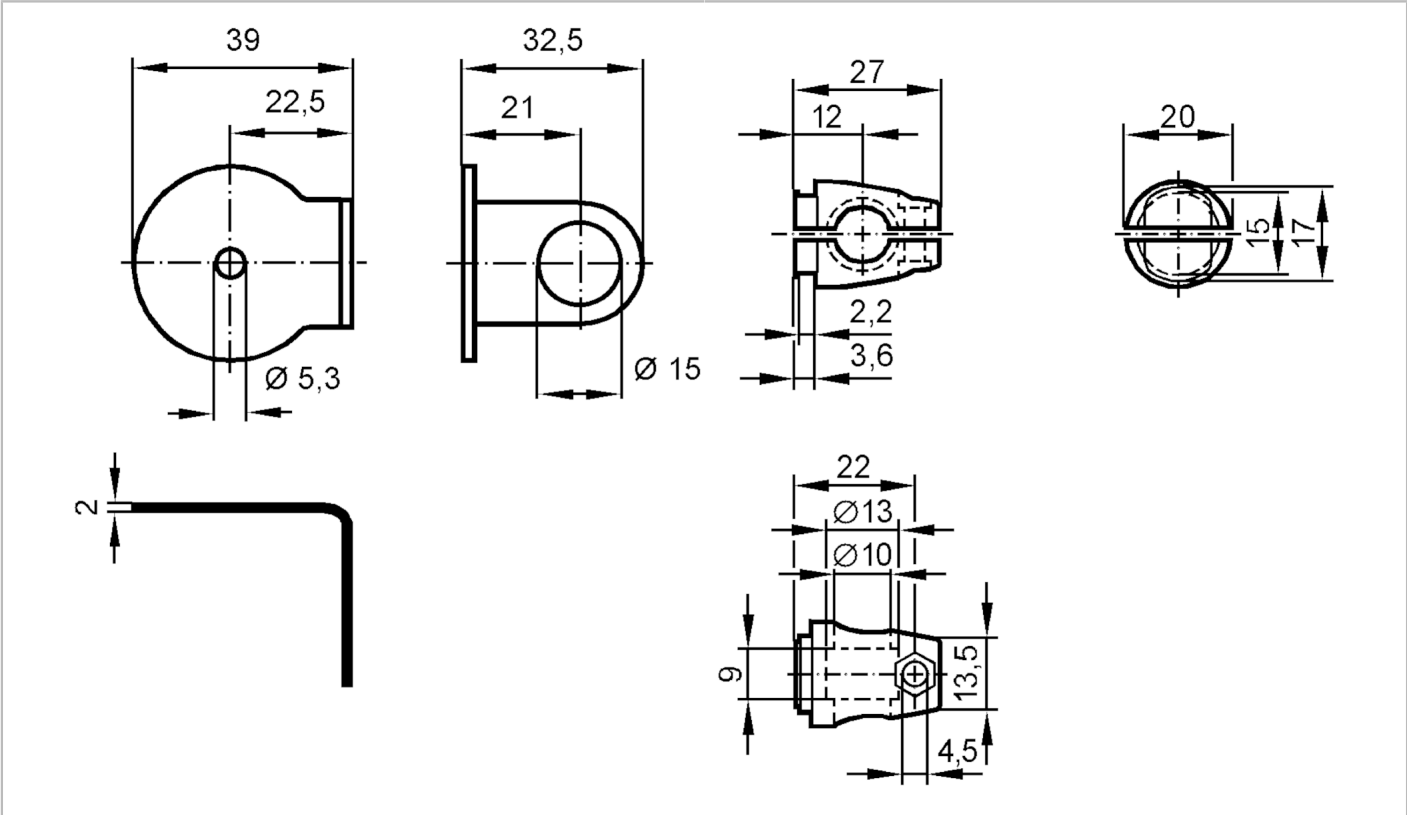
E20908



Mounting set for reflectors

SYSTEM COMPONENT REFL ROD

Article no longer available - archive entry



Application

Design

for reflector

Mechanical data

Type of mounting

Mounting rod; ( $\varnothing 10$  mm)

Material

fixture: stainless steel (1.4571/316Ti ); Clamp: diecast zinc

Remarks

Pack quantity

1 pcs.