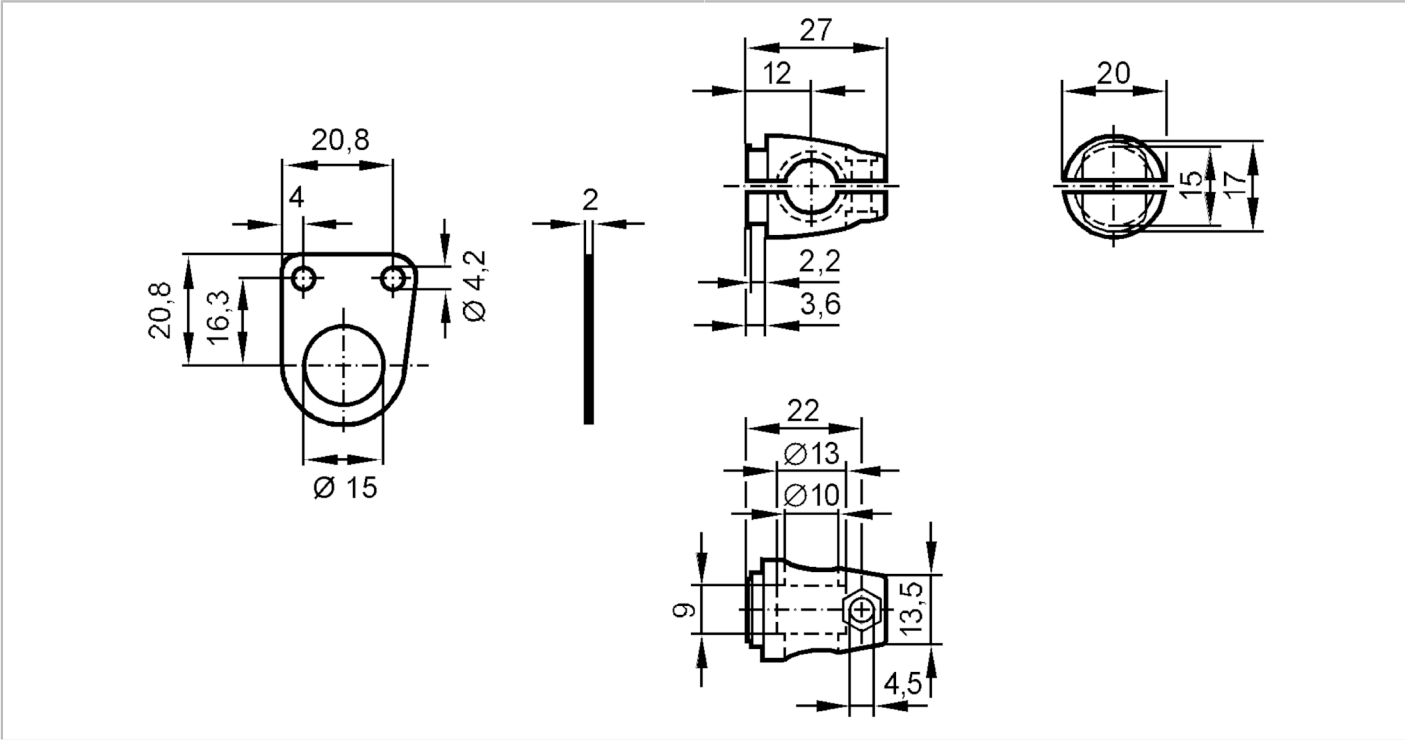




Mounting set for photoelectric sensors

SYSTEM COMPONENT OC BOLT

Article no longer available - archive entry



Application	
Design	Clamp mounting
Mechanical data	
Weight [g]	90.6
Type of mounting	free-standing; (M8)
Material	fixture: stainless steel (1.4571/316Ti); Clamp: stainless steel (1.4408)
Accessories	
Items supplied	screw: 1 x M8 x 40
Remarks	
Pack quantity	1 pcs.