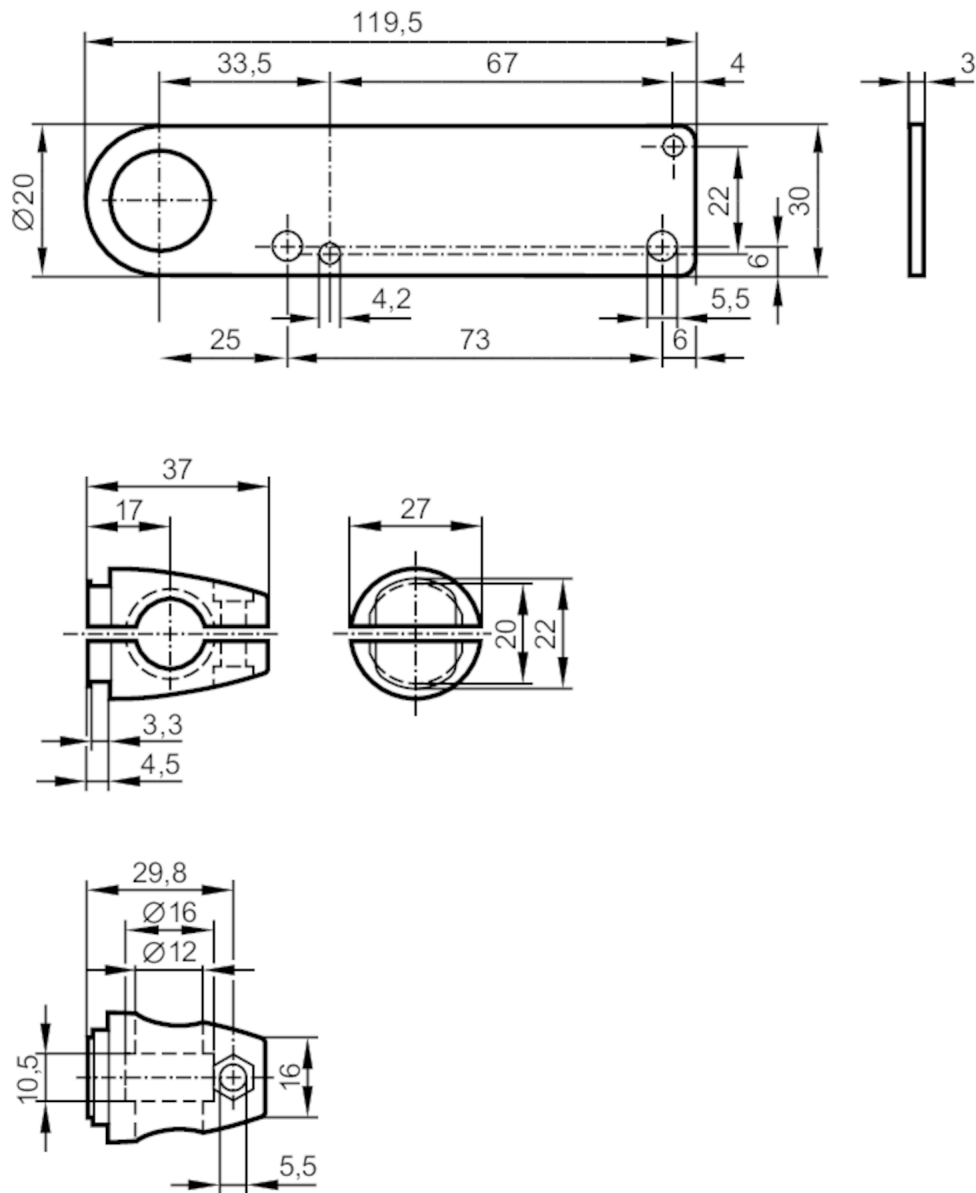




Mounting set for photoelectric sensors

SYSTEM COMPONENT OT BOLT



Application

Design

Clamp mounting

Mechanical data

Weight

[g]

235

Type of mounting

free-standing; (M10)

Material

fixture: stainless steel (1.4571/316Ti ); Clamp: diecast zinc

Accessories

Items supplied

head cap screw: 1 x M10 x 55

Remarks

Pack quantity

1 pcs.