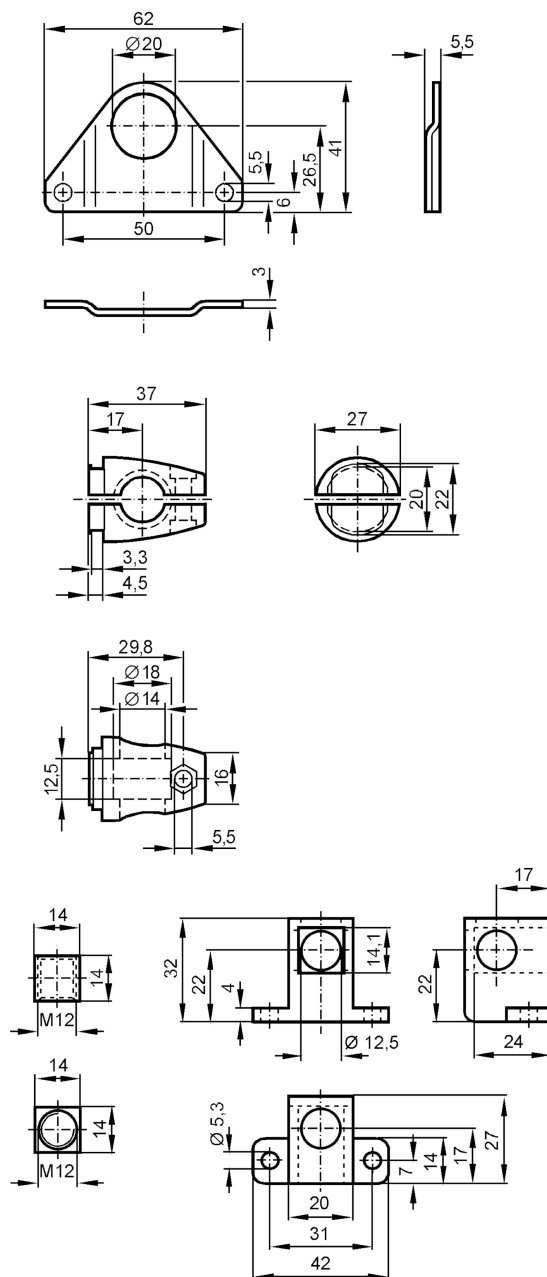


Mounting set for photoelectric sensors

SYSTEM COMPONENT OL RAIL

Article to be discontinued



Application

Design

Clamp mounting

Mechanical data

Weight

[g]

362.8

Type of mounting

aluminum profile

Material

Clamp: diecast zinc; fixture: stainless steel (1.4571/316Ti); CUBE: diecast zinc

Accessories

Items supplied

screw: 1 x M12 x 120

Remarks

Pack quantity

1 pcs.