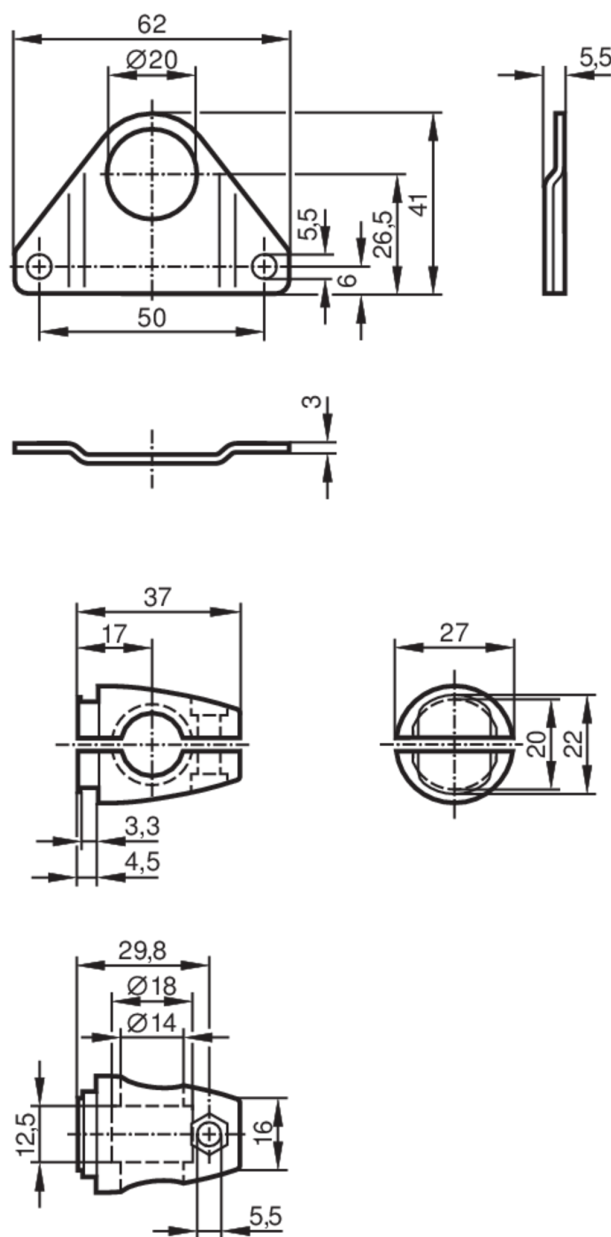




Mounting set for photoelectric sensors

SYSTEM COMPONENT OL ROD

Article no longer available - archive entry



Application

Design

Clamp mounting

Mechanical data

Type of mounting

Mounting rod; (Ø 14 mm)

Material

Clamp: stainless steel (1.4408); fixture: stainless steel (1.4571/316Ti)

Remarks

Pack quantity

1 pcs.