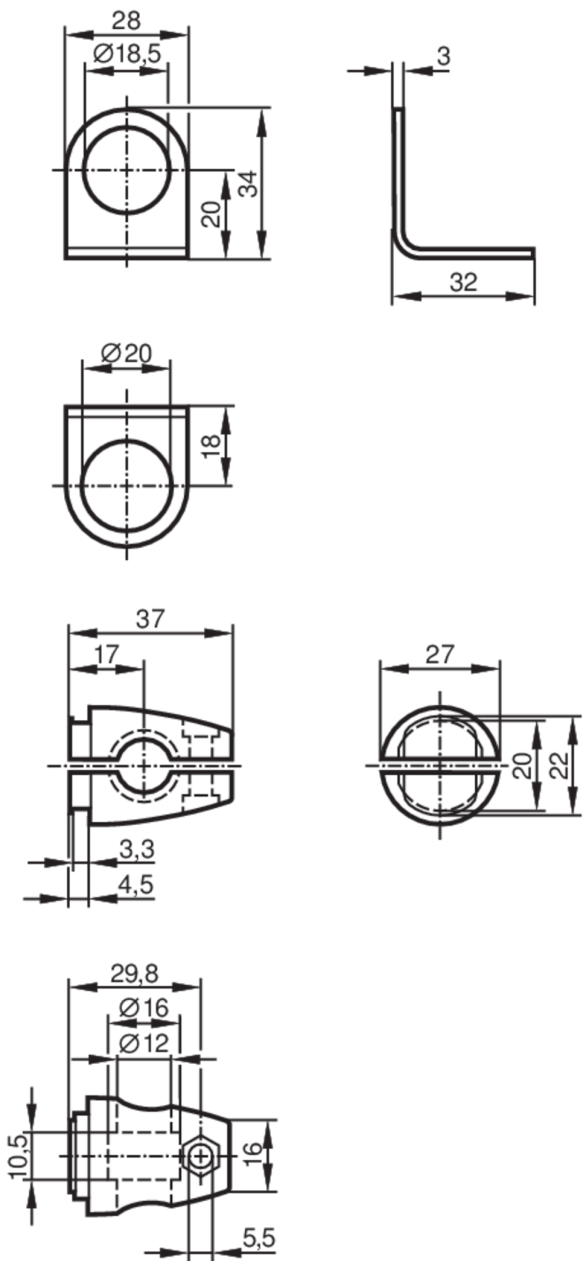




Mounting set for position sensors

SYSTEM COMPONENT M18 ROD



Application	
Design	Clamp mounting
Mechanical data	
Weight [g]	117
Type of mounting	Mounting rod; ($\varnothing 12$ mm)
Dimensions [mm]	$\varnothing 18.5$
Material	fixture: stainless steel (1.4571/316Ti); Clamp: stainless steel (1.4408)
Remarks	
Pack quantity	1 pcs.