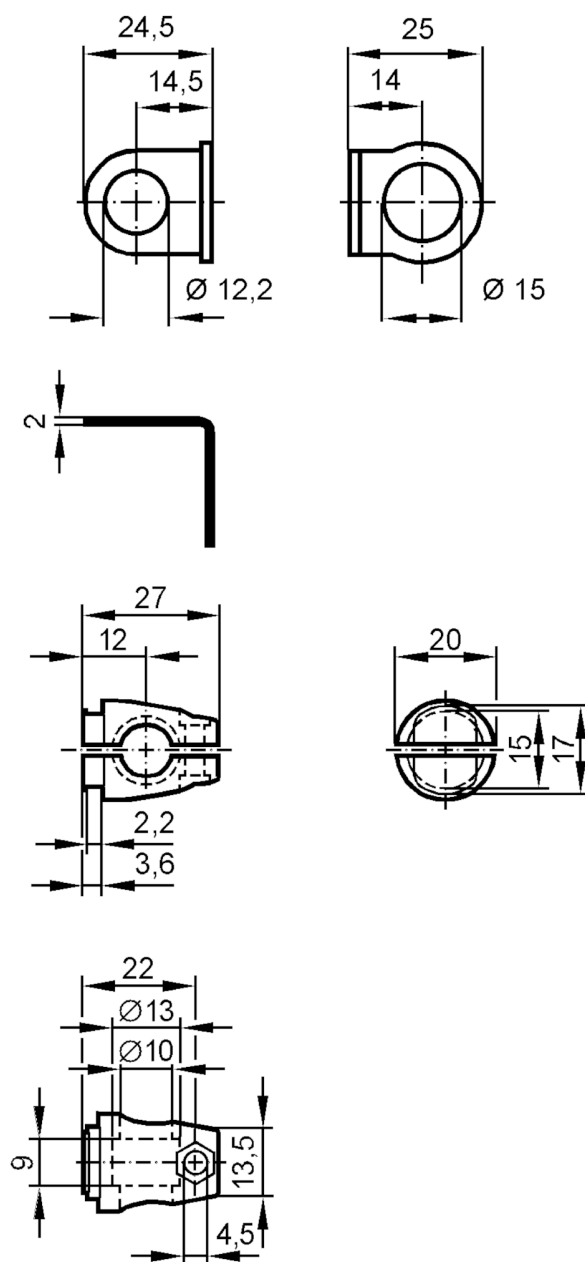


## Mounting set for position sensors

SYSTEM COMPONENT M12 ROD

Article no longer available - archive entry



## Mechanical data

Type of mounting	Mounting rod; ( $\varnothing 10$ mm)
Dimensions [mm]	$\varnothing 12.2$
Material	fixture: stainless steel (1.4571/316Ti ); Clamp: diecast zinc

## Remarks

Pack quantity	1 pcs.
---------------	--------