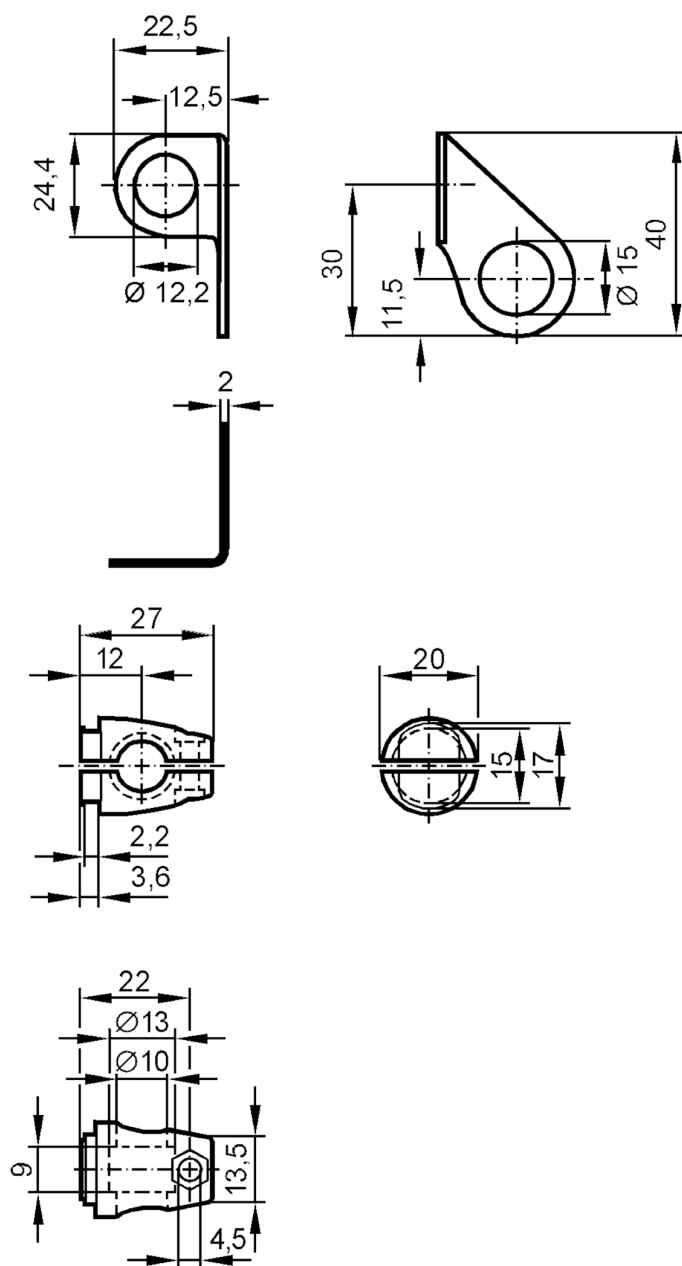




Mounting set for position sensors

SYSTEM COMPONENT M12 BOLT



Application

Design

Clamp mounting

Mechanical data

Weight

[g]

87

Type of mounting

free-standing; (M8)

Dimensions

[mm]

 $\varnothing 12.2$

Material

fixture: stainless steel (1.4571/316Ti); Clamp: stainless steel (1.4408)

Accessories

Items supplied

screw: 1 x M8 x 40

Remarks

Pack quantity

1 pcs.