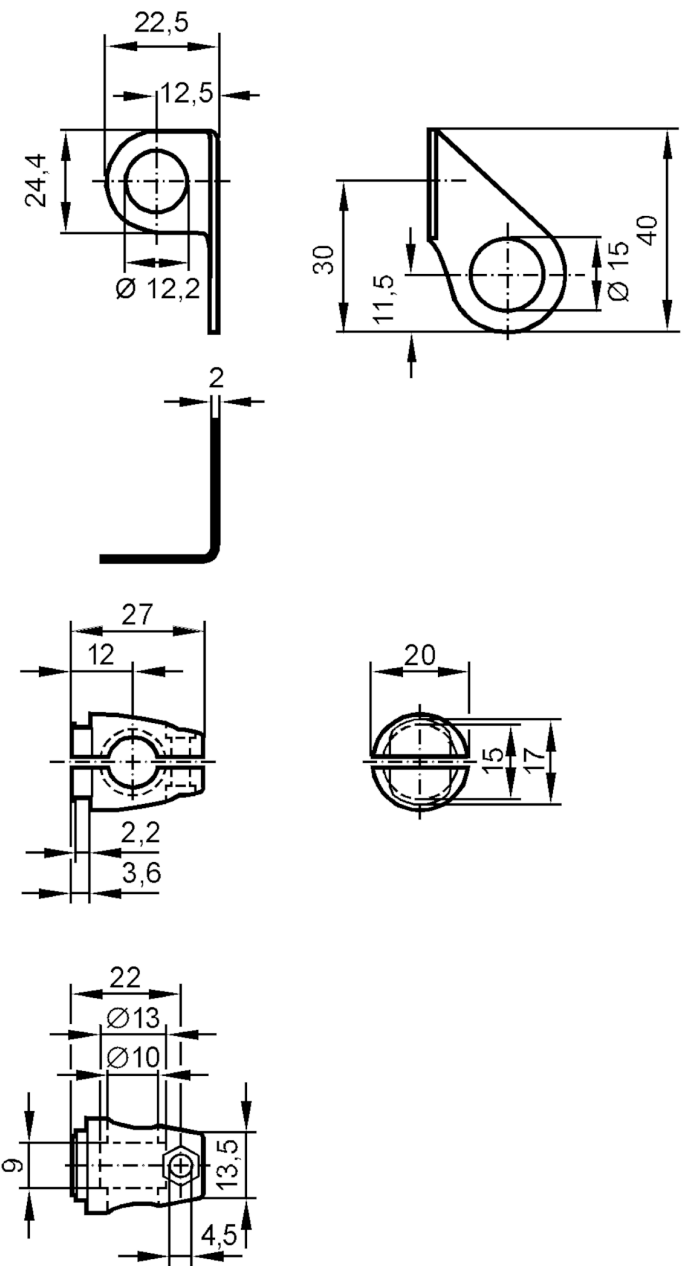


E20856



Mounting set for position sensors

SYSTEM COMPONENT M12 BOLT



Application	
Design	Clamp mounting
Mechanical data	
Weight [g]	83
Type of mounting	free-standing; (M8)
Dimensions [mm]	Ø 12.2
Material	fixture: stainless steel (1.4571/316Ti); Clamp: diecast zinc
Accessories	
Items supplied	screw: 1 x M8 x 40
Remarks	
Pack quantity	1 pcs.