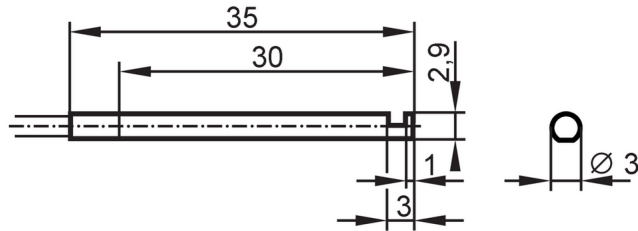


E20714



Fiber optic through beam sensor

FE-11-E-V-E3R/2m



Application	
Design	90° deflection of the light beam
Function principle	Through-beam sensor
Application	For use in industrial environments
Monitoring range	
Range with fiber optic amplifier type	OB50; OBF; OCF; OO50
OB50	
Range of fiber optics [mm]	140
OBF	
Range of fiber optics [mm]	230
OCF (High Power)	
Range of fiber optics [mm]	4000
OO50	
Range of fiber optics [mm]	400
Operating conditions	
Ambient temperature [°C]	-40...70
Mechanical data	
Weight [g]	58.5
Version of sensing head	angled
Sensing head diameter [mm]	3
Sensing head length [mm]	35
Total length [mm]	2000
Min. bending radius [mm]	25
Fiber arrangement	●
Fiber material	PMMA
Fiber head material	stainless steel (1.4305 / 303)
Fiber sheath material	PE
Accessories	
Items supplied	Mounting clamp:, E20107
Remarks	
Pack quantity	1 pcs.