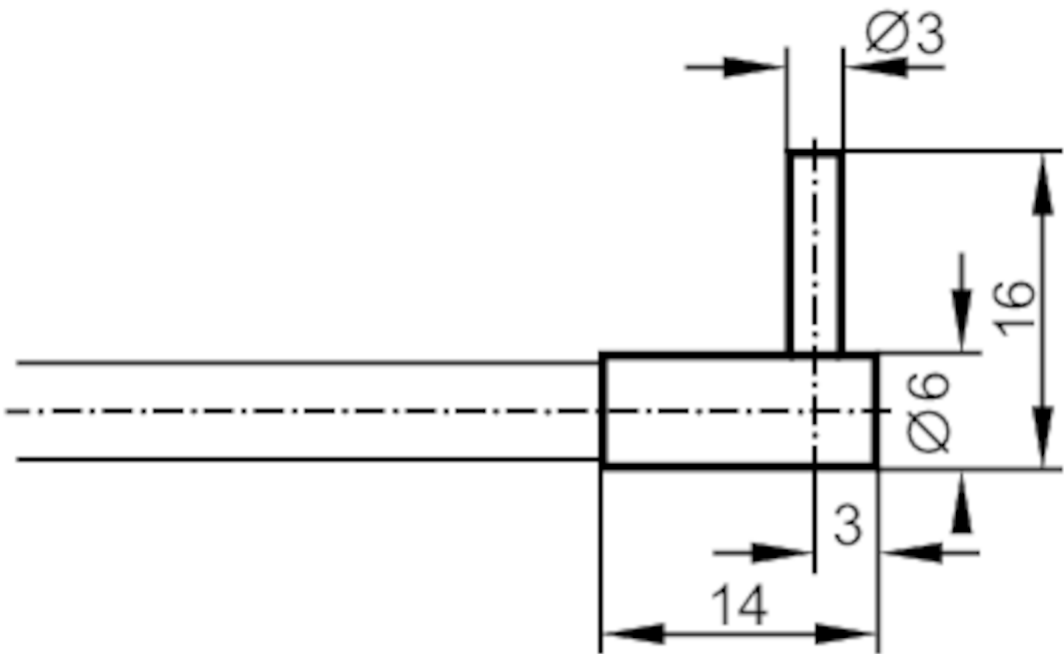




Fiber optic through beam sensor

FE-00-M-V-R3/1M



| Application | | |
|---------------------------------------|--|-----------|
| Function principle | Through-beam sensor | |
| Application | High temperature resistance; Robust design for use in harsh industrial environments; Resistant to various aggressive chemicals | |
| Monitoring range | | |
| Range with fiber optic amplifier type | OCF; OKF; OOF; OUF | |
| OCF (High Power) | | |
| Range of fiber optics | [mm] | 1030 |
| OKF | | |
| Range of fiber optics | [mm] | 120 |
| OOF | | |
| Range of fiber optics | [mm] | 400 |
| OUF | | |
| Range of fiber optics | [mm] | 120 |
| Operating conditions | | |
| Ambient temperature | [°C] | -20...150 |
| Mechanical data | | |
| Weight | [g] | 128.5 |
| Version of sensing head | angled | |
| Sensing head diameter | [mm] | 3 |

E20500



Fiber optic through beam sensor

FE-00-M-V-R3/1M

| | | |
|-----------------------|------|--------------------------------|
| Sensing head length | [mm] | 10 |
| Total length | [mm] | 1000 |
| Min. bending radius | [mm] | 20 |
| Fiber arrangement | | |
| Fiber material | | glass |
| Fiber head material | | stainless steel (1.4305 / 303) |
| Fiber sheath material | | metal silicone |

Accessories

| | |
|----------------|--------|
| Items supplied | E20103 |
|----------------|--------|

Remarks

| | |
|---------------|--------|
| Pack quantity | 1 pcs. |
|---------------|--------|