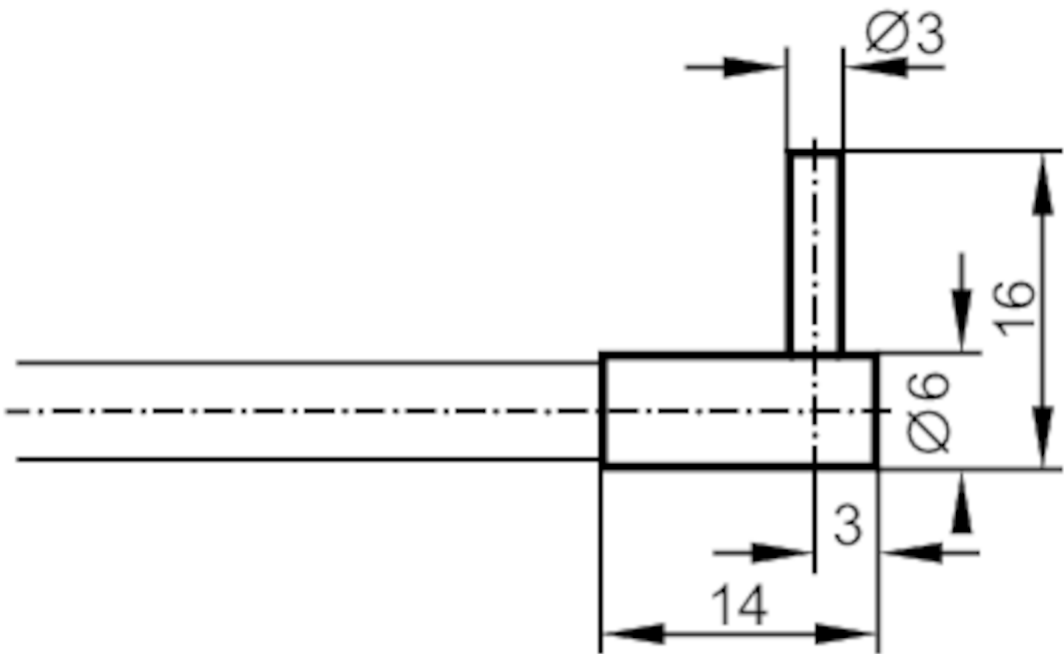




Fiber optic through beam sensor

FE-00-M-V-R3



Application		
Function principle	Through-beam sensor	
Application	High temperature resistance; Robust design for use in harsh industrial environments; Resistant to various aggressive chemicals	
Monitoring range		
Range with fiber optic amplifier type	OCF; OKF; OOF; OUF	
OCF (High Power)		
Range of fiber optics	[mm]	1200
OKF		
Range of fiber optics	[mm]	120
OOF		
Range of fiber optics	[mm]	400
OUF		
Range of fiber optics	[mm]	120
Operating conditions		
Ambient temperature	[°C]	-20...150
Mechanical data		
Weight	[g]	95.5
Version of sensing head	angled	
Sensing head diameter	[mm]	3

# E20493



## Fiber optic through beam sensor

FE-00-M-V-R3

Sensing head length	[mm]	10
Total length	[mm]	600
Min. bending radius	[mm]	20
Fiber arrangement		●
Fiber material		glass
Fiber head material		stainless steel (1.4305 / 303)
Fiber sheath material		metal silicone

### Accessories

Items supplied	Mounting clamp: 2, E20103
----------------	---------------------------

### Remarks

Pack quantity	1 pcs.
---------------	--------