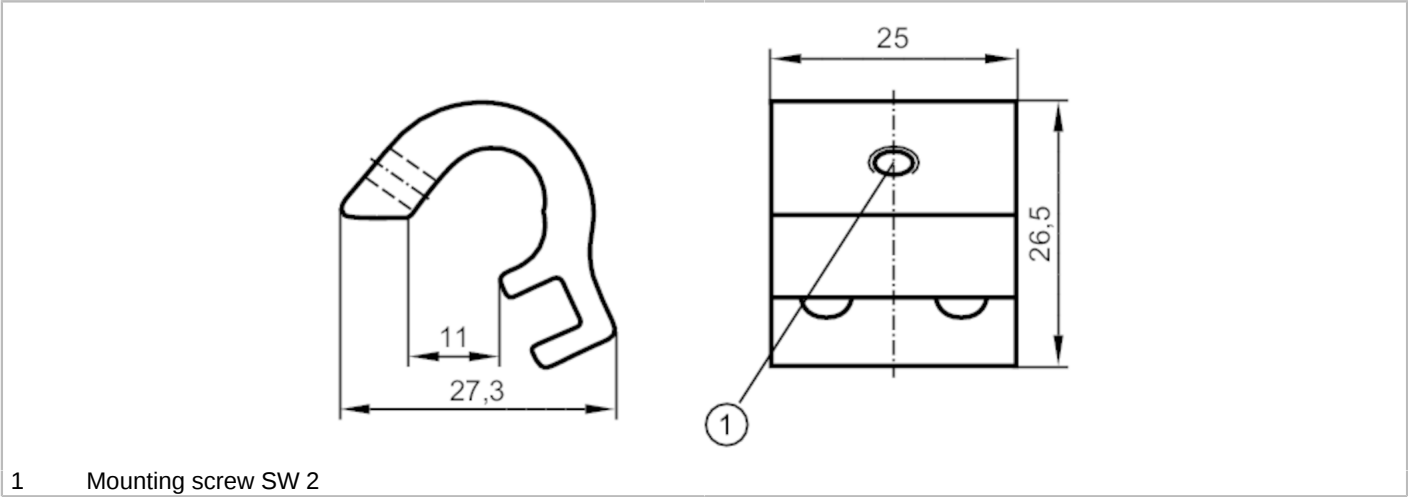


E12231



Mounting adapter for tie-rod/integrated profile cylinders

ADAPT TIE ROD/PROFILE



Application	
Design	for types MKT, for types MKT
Mechanical data	
Weight	[g] 16.1
Material	Adapter: aluminum; screw: stainless steel
Clamping range	[mm] 5...11
Remarks	
Pack quantity	1 pcs.