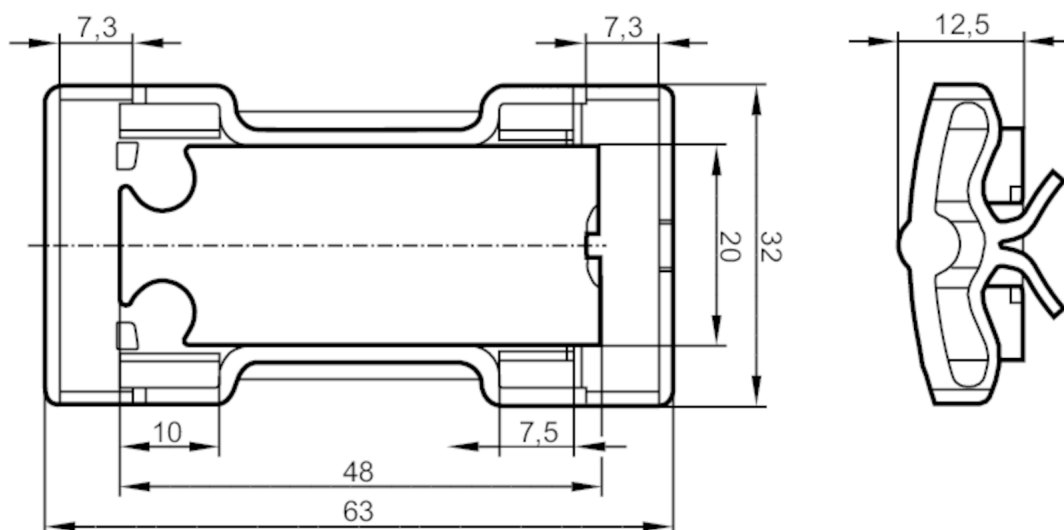


# E12163



### Mounting adapter for mounting to pipes

## MOUNTING ADAPTER KQ



## Application

Design	Fixing of the types KQ5 and KQ6 to pipes and tubes, Pipe and tube installation KQ5 / KQ6 with cable ties
--------	-------------------------------------------------------------------------------------------------------------

## Operating conditions

Ambient temperature	[°C]	-25...80
---------------------	------	----------

## Mechanical data

Weight	[g]	6.6
Dimensions	[mm]	32 x 12.5 x 63
Material		Mounting adapter: PA 12 black

#### Remarks

Pack quantity	1 pcs.
---------------	--------