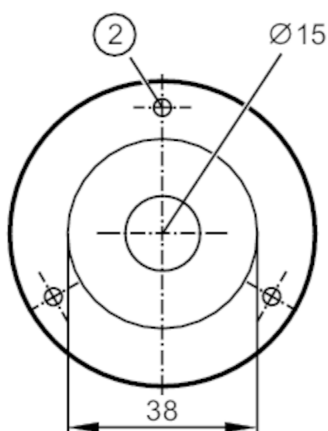
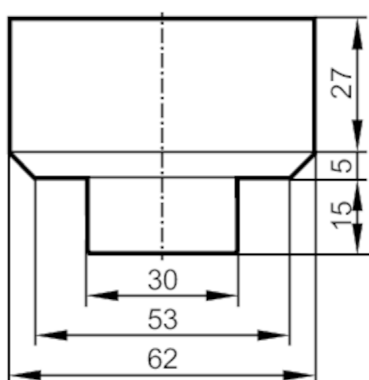
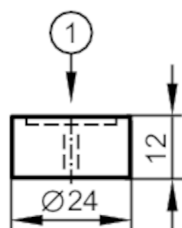


## Mounting adapter for position sensors used on rising stem valves

ADAPTER\_VALVIS\_08

Article no longer available - archive entry



- 1 threaded hole M4 to fix the target on the valve piston  
2 bore hole to fix the valve sensor on the adapter

### Application

Design accessories for, for Gemü actuators with mounting kit, IX5010, IX5030

### Mechanical data

Weight [g] 144.7

Material Adapter: POM; Target: stainless steel

### Accessories

Items supplied screws: 3, thread forming

### Remarks

Pack quantity 1 pcs.