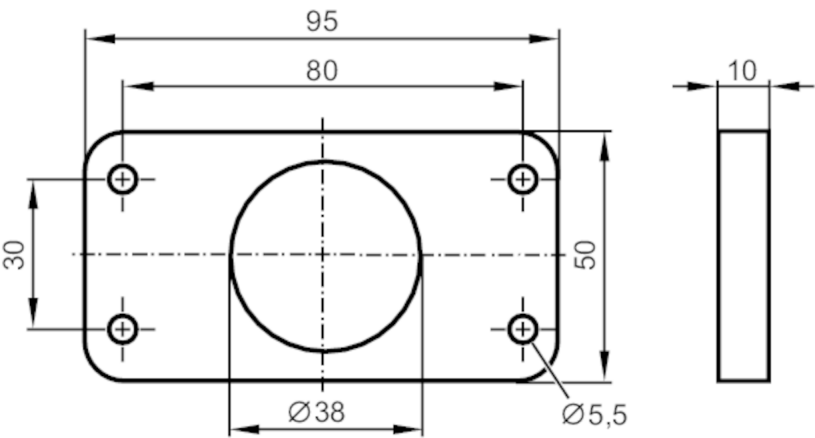


E12569



Mounting plate

ADAPTER 80X30X10



Application		
Design		for types MVQ
Mechanical data		
Weight	[g]	71.6
Dimensions	[mm]	10 x 95 x 50
Hole spacing for mounting bracket		80 x 30 mm
Shaft height for valve drive		30 mm
Suitable for shaft diameters	[mm]	< 38
Material		POM black
Remarks		
Pack quantity		1 pcs.