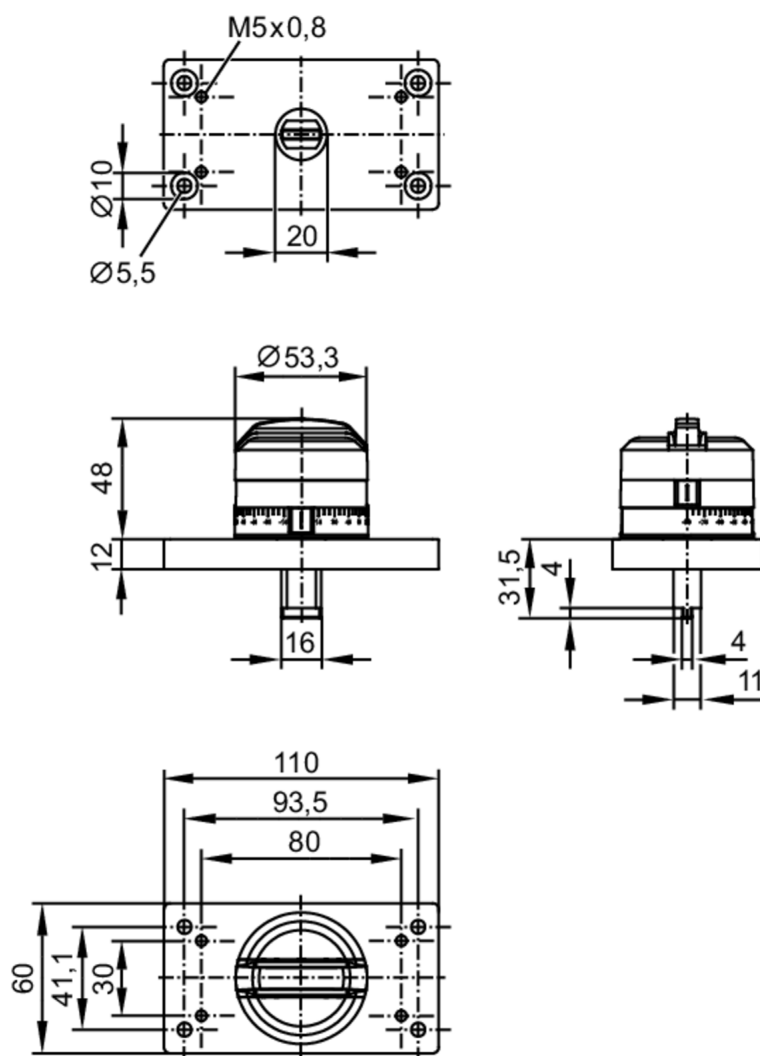


E11243



Target puck mounting set for valve actuators

MOUNTING KIT KEYSTONE



Application

Design

for Keystone actuators

Mechanical data

Weight

[g]

200.5

Accessories

Items supplied

puck with mounting plate for Keystone drives

serrated washer: 2

screw: 4 x M5 x 12

screw: 2 x M5 x 35

Remarks

Pack quantity

1 pcs.