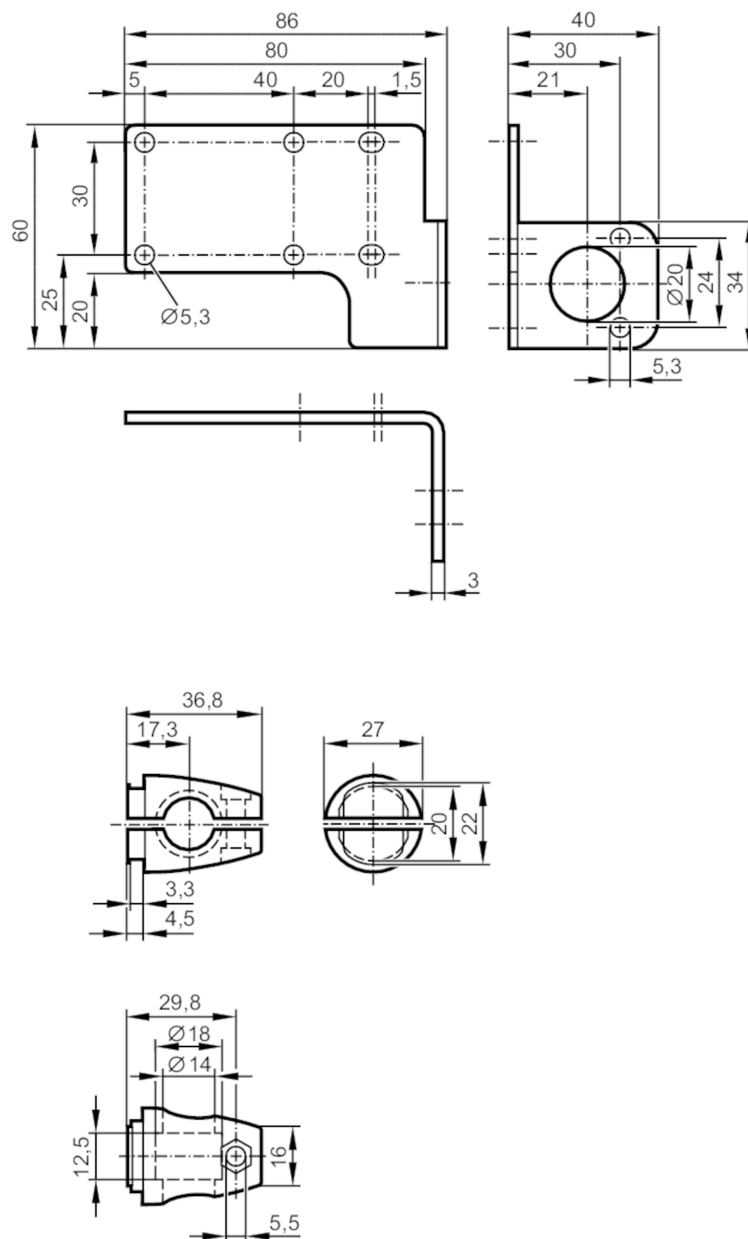


## Mounting set for position sensors

MOUNTING BRACKET ANGLED



## Application

Design

Clamp mounting, angled, only for flush-mountable sensors

## Mechanical data

Weight

[g]

175.8

Type of mounting

Mounting rod; ( $\varnothing 14$  mm)

Material

Clamp: stainless steel (1.4408); fixture: stainless steel (1.4571/316Ti)

## Remarks

Pack quantity

1 pcs.