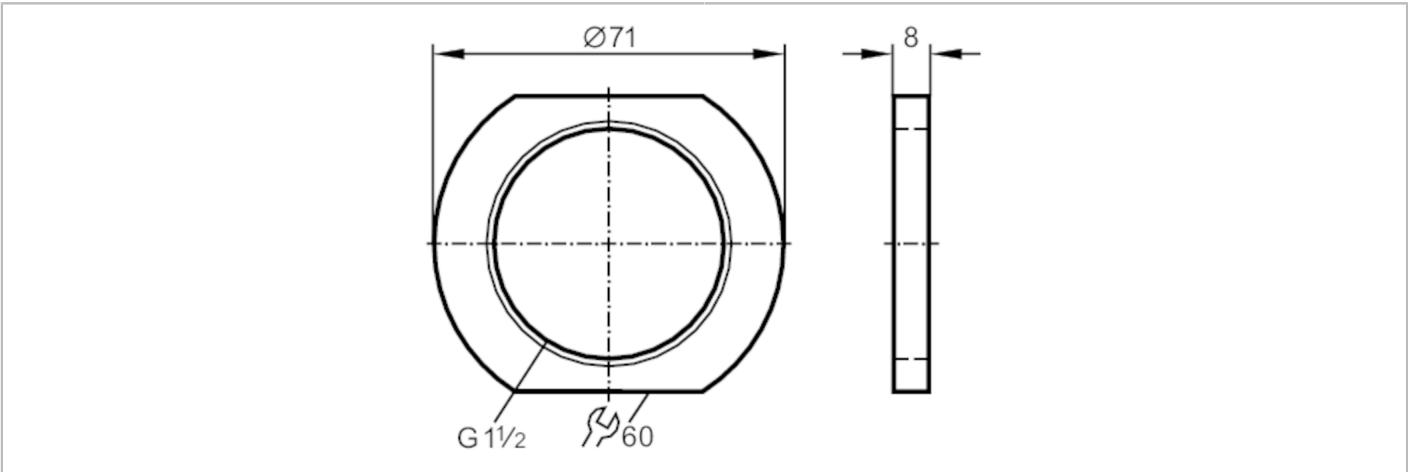


# E11031



## Lock nut for mounting adapter

NUT MOUNTING ADAPTER POM



Application		
Design		for mounting adapter
Medium temperature	[°C]	-25...100
Medium temperature short time	[°C]	-25...110
Mechanical data		
Weight	[g]	23.4
Dimensions	[mm]	G 1 1/2
Thread designation		G 1 1/2
Outer diameter	[mm]	71
Material		POM
Remarks		
Pack quantity		1 pcs.