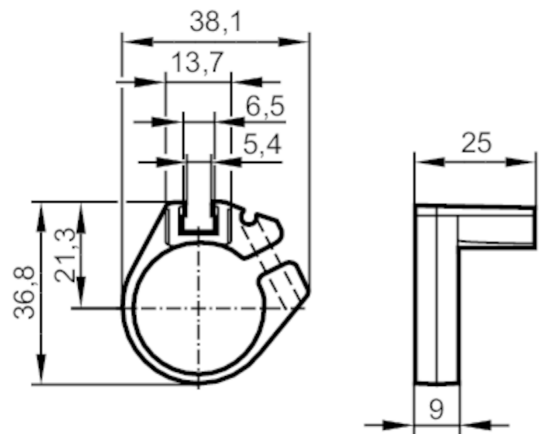


E11960



Clean-line cylinder mounting clamp for cylinder sensors

CLAMP FOR CLEAN LINE CYL D25



Application	
Design	for types MKT / MKI
Operating conditions	
Ambient temperature	[°C] 0...50
Mechanical data	
Weight	[g] 9.3
Material	mounting clamp: POM; fixture: aluminum; screw: stainless steel
Tightening torque	[Nm] 0.5; (Mounting screw)
Piston diameter	[mm] 25
Accessories	
Items supplied	socket head screws: 1 x SW2,5
Remarks	
Pack quantity	1 pcs.
Diagrams and graphs	
Installation	