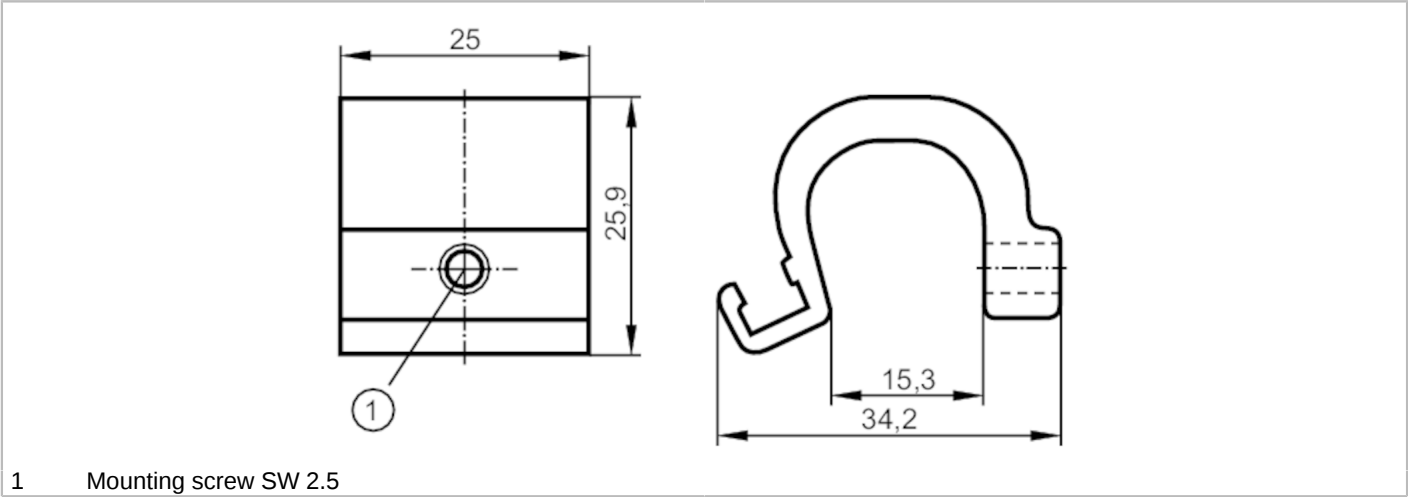




Mounting adapter for tie-rod/integrated profile cylinders

ADAPT TIE ROD/PROFILE/CYL



| Application     |   |
|-----------------|---|
| Design          | for types MKT                             |
| Mechanical data |   |
| Weight          | [g] 22                                    |
| Dimensions      | [mm] 25.9 x 25 x 34.2                     |
| Material        | Adapter: aluminum; screw: stainless steel |
| Clamping range  | [mm] 9...15                               |
| Remarks         |   |
| Pack quantity   | 1 pcs.                                    |