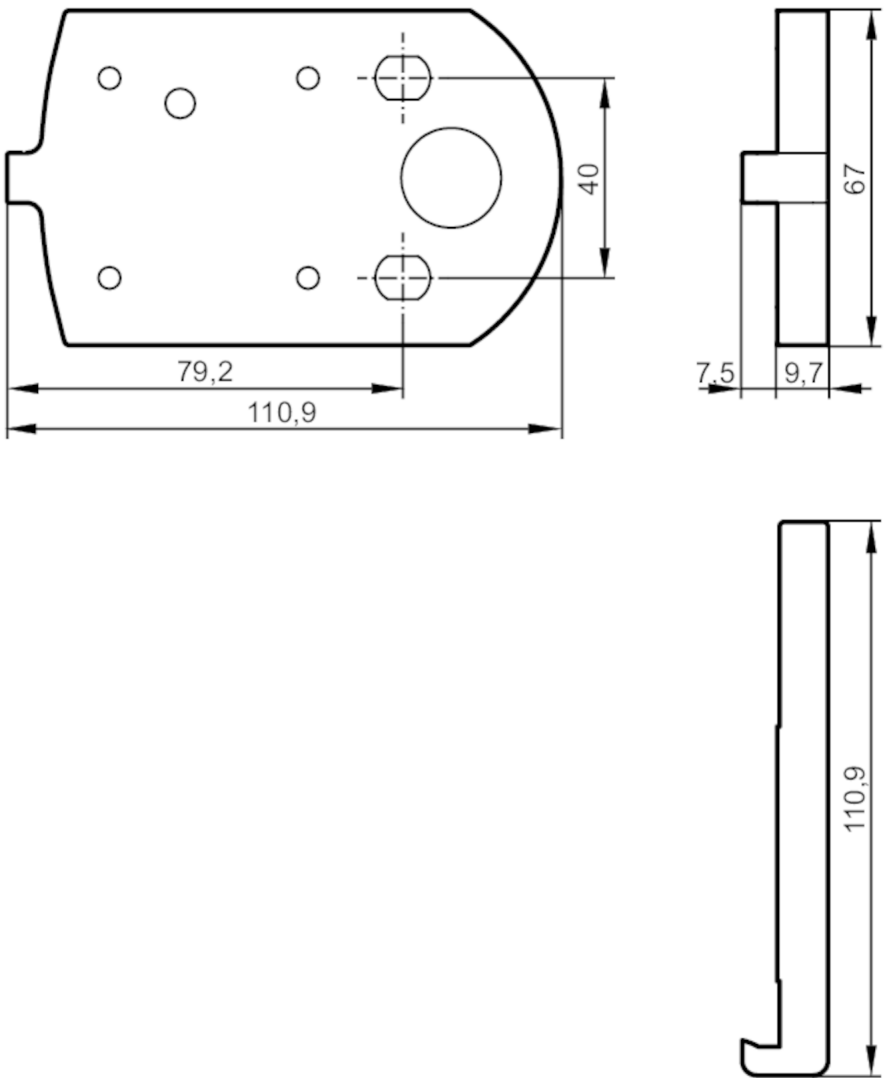


E3D303



Heat conductor

HEAT CONDUCTOR SMART CAM



Mechanical data

Weight	[g]	278.5
Type of mounting		panel/surf.
Material		Heat conductor: AlMg3

Accessories

Items supplied	cylinder screws: 2 x M5 x 70, ISO 4762
	cylinder screws: 2 x M5 x 75, ISO 4762
	countersunk screws: 4 x M5 x 16
	installation instructions

Remarks

Pack quantity	1 pcs.
---------------	--------