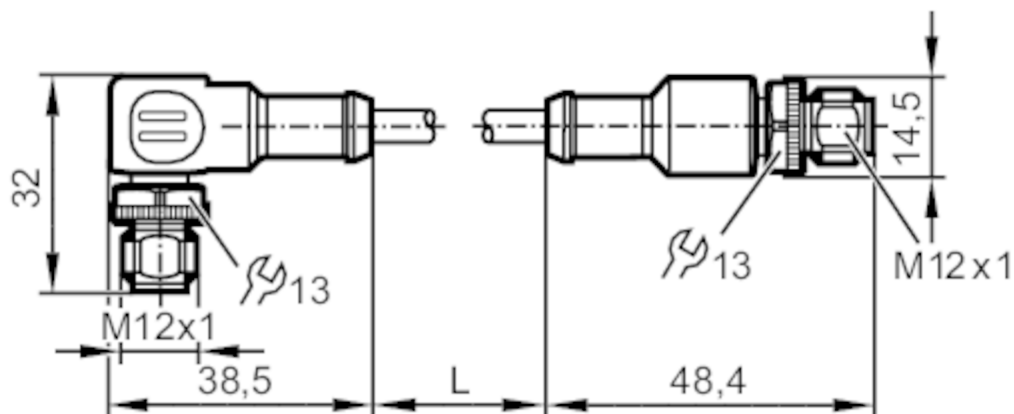


# E3M153



## Connection cable

CONNECTION CABLE M12 16M



### Application

System	screened cable; Drag chain suitability
Design	for 3D Smart sensor mobile with analog video output PAL

### Electrical data

Operating voltage	[V]	< 25 AC / < 60 DC
Protection class		III

### Operating conditions

Ambient temperature	[°C]	-40...80
Protection		IP 67; IP 69K

### Mechanical data

Weight	[g]	806.2
Material		housing: PUR; sealing: FKM; contact pins: CuSn6 nickel-plated and tin-plated
Material nut		stainless steel (1.4305 / 303)
Drag chain suitability		yes
Drag chain suitability	Bending radius for fixed installation	≥ 60 mm

### Remarks

Pack quantity		1 pcs.
---------------	--	--------

# E3M153

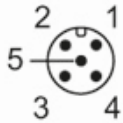


## Connection cable

CONNECTION CABLE M12 16M

### Electrical connection - plug

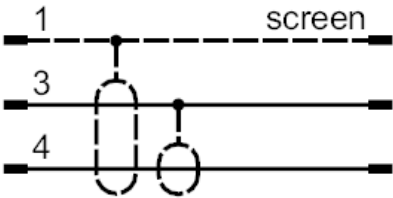
Connector: 1 x M12, angled; coding: A; Locking: stainless steel (1.4305 / 303)



### Electrical connection

Cable: 16 m, black, Ø 6 mm, screened; 3 x 0.25 mm²

### Connection



- |    |                 |
|----|-----------------|
| 1: | screen          |
| 2: | not used        |
| 3: | coax screen     |
| 4: | coax cable core |
| 5: | not used        |

### Electrical connection - plug

Connector: 1 x M12, straight; coding: A; Locking: stainless steel (1.4305 / 303)

