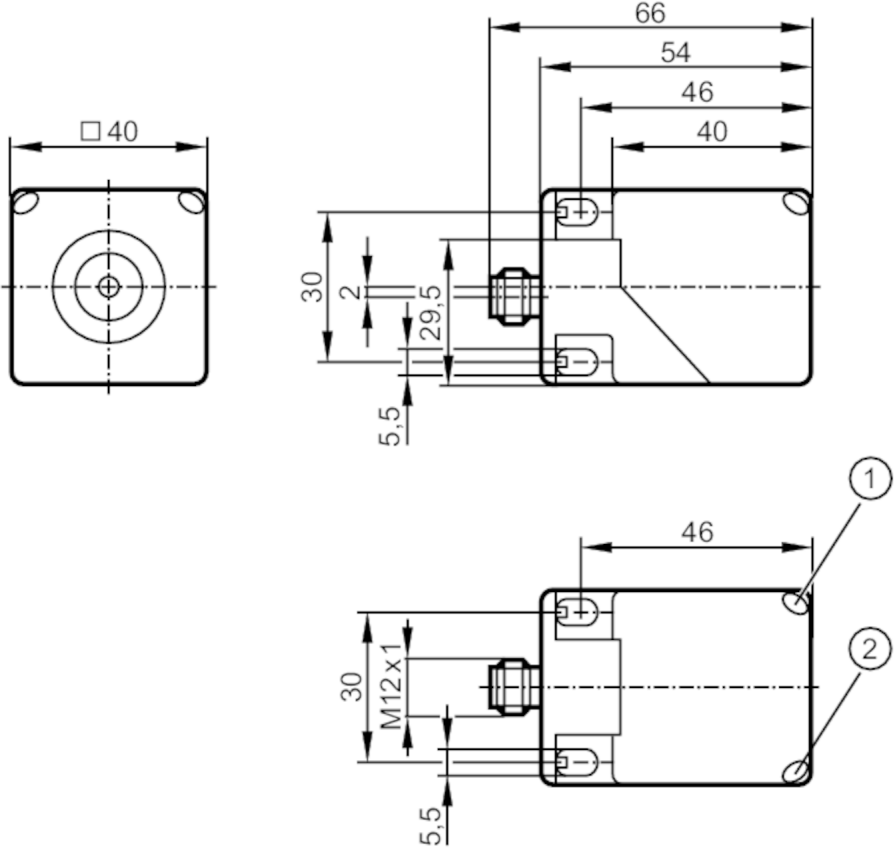




Compact evaluation unit for speed monitoring

DMC3024-WRKG/IO/US



- 1 LED yellow
- 2 LED green



Product characteristics	
Electrical design	PNP/NPN
Output function	normally open / closed; (configurable)
Sensing range [mm]	24
Communication interface	IO-Link
Housing	rectangular
Dimensions [mm]	40 x 40 x 54
Application	
Application	simple evaluation of rotating and linear movement with regard to underspeed; blocking
Electrical data	
Nominal voltage DC [V]	10...30
Current consumption [mA]	< 10
Protection class	III
Reverse polarity protection	yes
Outputs	
Electrical design	PNP/NPN
Output function	normally open / closed; (configurable)



Compact evaluation unit for speed monitoring

DMC3024-WRKG/IO/US

Max. voltage drop switching output DC	[V]	2.5
Permanent current rating of switching output DC	[mA]	100
Short-circuit proof		yes
Overload protection		yes
Monitoring range		
Sensing range	[mm]	24
Sensing range adjustable		no
Operating distance	[mm]	0...19.44
Measuring/setting range		
Setting range	[Imp/min]	5...9600
Measuring principle		inductive
Accuracy / deviations		
Correction factor		steel: 1 / stainless steel: 0.7 / brass: 0.5 / aluminum: 0.4 / copper: 0.3
Hysteresis	[% of Sr]	10
Reaction times		
Start-up delay	[s]	0...30; (In steps of: 100 ms; default: 15 s)
Max. damping frequency	[Imp/min]	12000
Interfaces		
Communication interface		IO-Link
Operating conditions		
Ambient temperature	[°C]	-40...85
Storage temperature	[°C]	-25...85
Protection		IP 67
Tests / approvals		
EMC	EN 61000-4-2 ESD	4 kV CD / 8 kV AD
	EN 61000-4-3 HF radiated	10 V/m
	EN 61000-4-4 Burst	2 kV
	EN 61000-4-6 HF conducted	10 V
	EN 55011	class B
	EN 60947-5-2	
MTTF	[years]	636
UL approval	UL approval number	A009
Mechanical data		
Weight	[g]	182
Housing		rectangular
Mounting		non-flush mountable
Dimensions	[mm]	40 x 40 x 54
Material		PA

DI5034



Compact evaluation unit for speed monitoring

DMC3024-WRKG/IO/US

Displays / operating elements

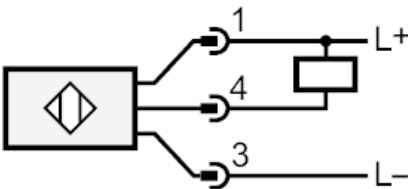
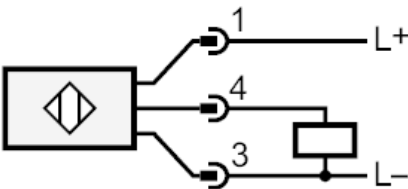
Display	Power	LED, green
	SIO mode	
	output stage supplied with current	4 x LED, yellow
	IO-Link mode	
	target in measuring range	4 x LED, yellow
	target outside measuring range	4 x LED, yellow flashing

Electrical connection

Connector: 1 x M12; coding: A; Moulded body: brass, white bronze coated



Connection



4: OUT / IO-Link