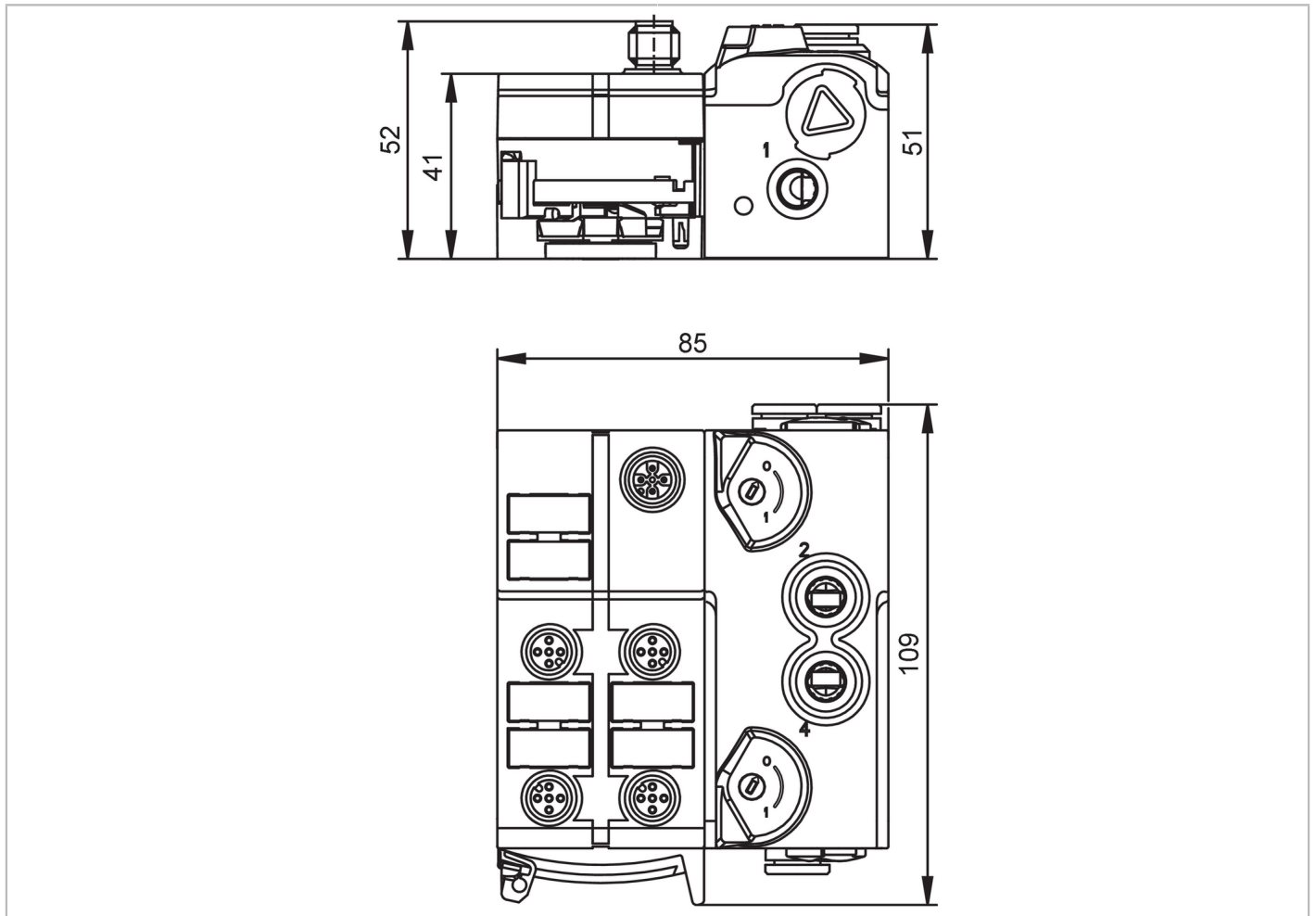


# AL5270



## IO-Link AirBox with quick mounting technology

IOL AirBox 1x5/3 closed 4x2DI



### Product characteristics

Number of inputs and outputs      Number of digital inputs: 8; Number of pneumatic outputs: 2

### Application

Design	housing for DIN rail mounting
Application	field installation; for use in wet environments
Media	compressed air
Medium temperature      [°C]	-10...50

### Electrical data

Operating voltage      [V]	18...30 DC; (to SELV/PELV)
Nominal voltage DC      [V]	24
Current consumption      [mA]	80...680; (24 V DC, full load)
Overvoltage category	II

### Inputs / outputs

Number of inputs and outputs      Number of digital inputs: 8; Number of pneumatic outputs: 2

### Inputs

Number of digital inputs	8; (4 x 2)
Input circuit of digital inputs	PNP

# AL5270



## IO-Link AirBox with quick mounting technology

IOL AirBox 1x5/3 closed 4x2DI

Sensor supply of the inputs		US
Voltage supply	[V]	18...30; (from the operating voltage)
Max. total current rating of inputs	[mA]	400
Input current High	[mA]	2...3.5
Input current low	[mA]	0...1.5
Switching level high	[V]	> 11
Digital inputs protected against short circuits		yes

### Outputs

Number of pneumatic outputs		2
Actuator supply outputs		US

### Interfaces

Communication interface		IO-Link
Transmission type		COM2 (38,4 kBaud)
IO-Link revision		1.1
SDCI standard		IEC 61131-9
Profiles	Common - I&D	Identification and Diagnosis
	Function	Locator
	Function	ProductURI
SIO mode		no
Required master port class		A
Min. process cycle time	[ms]	2.7
Supported DeviceIDs	<b>Type of operation</b>	<b>DeviceID</b>
	default	1506

### Operating conditions

Ambient temperature	[°C]	-10...55
Note on ambient temperature		Switching frequency < 1,66 Hz: -10...50 °C Switching frequency > 1,66 Hz: -10...55 °C
Max. relative air humidity	[%]	90; (non condensing)
Max. height above sea level	[m]	4000
Protection		IP 65; IP 67
Degree of soiling		2

### Mechanical data

Weight	[g]	136.5
Housing		rectangular
Type of mounting		Mounting on DIN rail; quick mounting; AS-i flat cable connection; (TH35 (EN 60715))
Dimensions	[mm]	109 x 85 x 52
Material		housing: PA 6.6; AirBox housing: PA 6; sealing: TPE; sealing rings: NBR
Pneumatic system		1 x 5/3-way slide valve (free from overlapping); middle position blocked
Operating pressure range		3...8 bar   43.5...116 psi
Air flow at 6/5 bar	[l/min]	500
Permissible compressed air		non-lubricated compressed air class 6-3-1; lubricated compressed air class 6-3-4
Manual override		pressing/releasing or pressing/turning/locking
Tube fittings		8 mm

# AL5270



## IO-Link AirBox with quick mounting technology

IOL AirBox 1x5/3 closed 4x2DI

Exhaust exhaust can be discharged through tube connection

### Displays / operating elements

Display	Power	LED, green
	errors	LED, red
	Function	LED, yellow

### Accessories

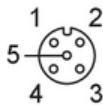
Items supplied	lower part
Accessories (optional)	Mounting plate:, E74999
	Module lower part:, E75000
	Protective cap: M12, E73004
	sealing plug:, E75231
	Silencer:, E75232
	Push-in L-fitting:, E75228
	Push-in T-fitting:, E75227

### Remarks

Remarks	If not pneumatically operated, E75231 sealing plug must be inserted.
	Avoid ingress of dirt and dust.
	Do not connect any of the following points to an external potential: L-, L+, I-1, I-2, I-3, I-4
	Please see the notes on compressed air and EMC/ESD under "Downloads"
Pack quantity	1 pcs.

### Electrical connection - Socket

Connector: 4 x M12; coding: A; Contacts: 5



### Digital input X1.0...X1.3

1	L+
2	IN2 DI2
3	L-
4	IN1 DI1
5	n.c.

### Electrical connection - plug

Connector: 1 x M12; coding: A; Contacts: 4



### voltage supply X1

1	L+
2	n.c.
3	L-
4	IO-Link

# AL5270

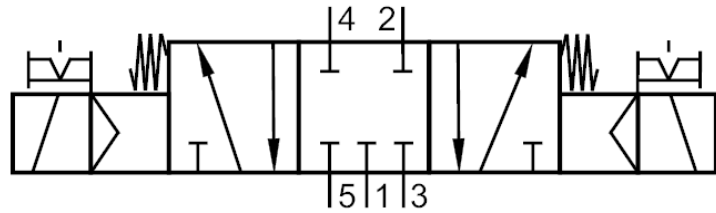


## IO-Link AirBox with quick mounting technology

IOL AirBox 1x5/3 closed 4x2DI

### Diagrams and graphs

Pneumatic symbol



1 x 5/3-way slide valve (free from overlapping); middle position blocked