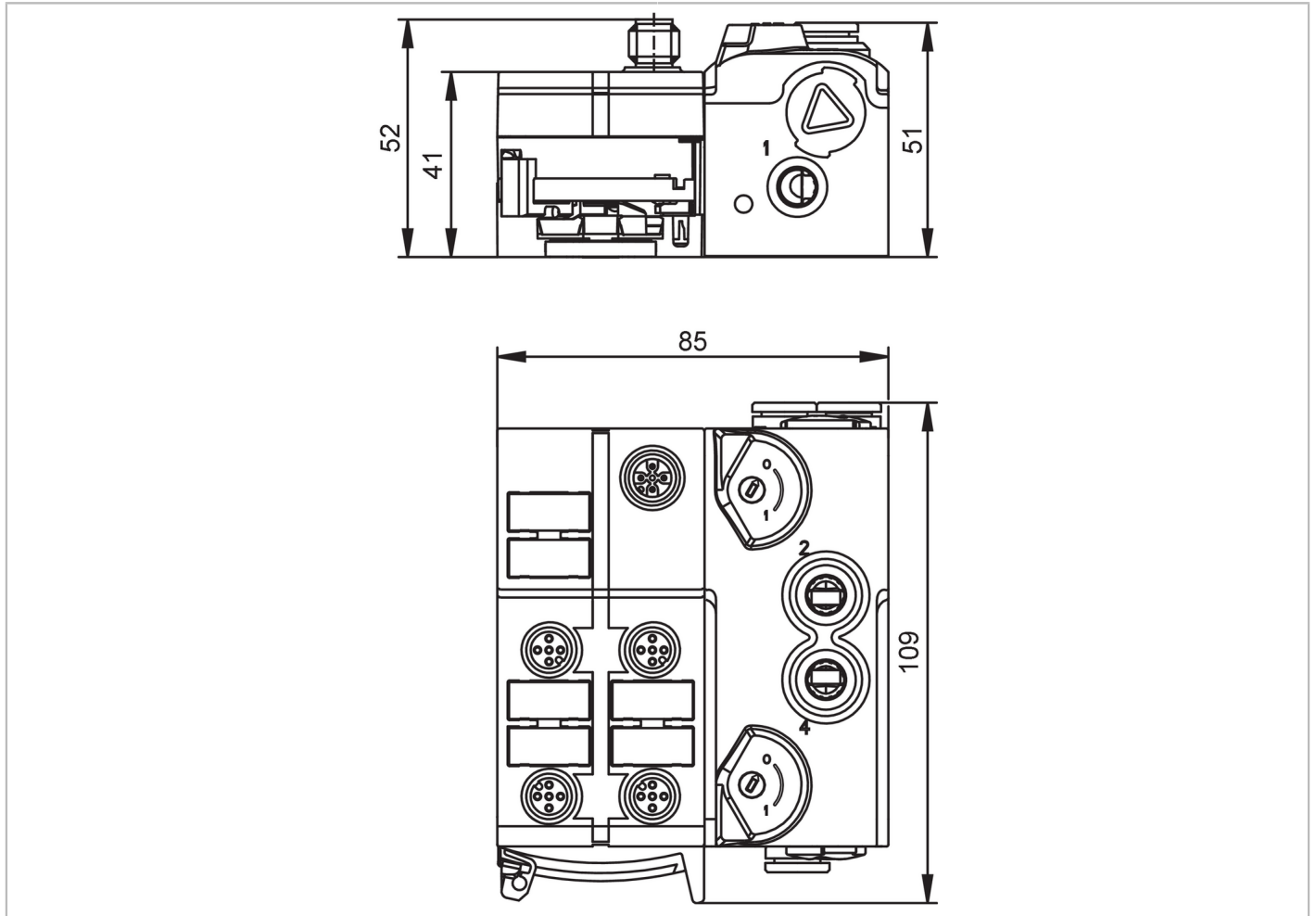


AL5251



IO-Link AirBox with quick mounting technology

IOL AirBox 1x5/2 bist. 4x2DI



Product characteristics	
Number of inputs and outputs	Number of digital inputs: 8; Number of pneumatic outputs: 2
Application	
Design	housing for DIN rail mounting
Application	field installation; for use in wet environments
Media	compressed air
Medium temperature [°C]	-10...50
Electrical data	
Operating voltage [V]	18...30 DC; (to SELV/PELV)
Nominal voltage DC [V]	24
Current consumption [mA]	80...680; (24 V DC, full load)
Overvoltage category	II
Inputs / outputs	
Number of inputs and outputs	Number of digital inputs: 8; Number of pneumatic outputs: 2
Inputs	
Number of digital inputs	8; (4 x 2)
Input circuit of digital inputs	PNP

AL5251



IO-Link AirBox with quick mounting technology

IOL AirBox 1x5/2 bist. 4x2DI

Sensor supply of the inputs		US
Voltage supply	[V]	18...30; (from the operating voltage)
Max. total current rating of inputs	[mA]	400
Input current High	[mA]	2...3.5
Input current low	[mA]	0...1.5
Switching level high	[V]	> 11
Digital inputs protected against short circuits		yes

Outputs

Number of pneumatic outputs		2
Actuator supply outputs		US

Interfaces

Communication interface		IO-Link
Transmission type		COM2 (38,4 kBaud)
IO-Link revision		1.1
SDCI standard		IEC 61131-9
Profiles	Common - I&D	Identification and Diagnosis
	Function	Locator
	Function	ProductURI
SIO mode		no
Required master port class		A
Min. process cycle time	[ms]	2.7
Supported DeviceIDs	Type of operation	DeviceID
	default	1505

Operating conditions

Ambient temperature	[°C]	-10...55
Note on ambient temperature		Switching frequency < 1,66 Hz: -10...50 °C Switching frequency > 1,66 Hz: -10...55 °C
Max. relative air humidity	[%]	90; (non condensing)
Max. height above sea level	[m]	4000
Protection		IP 65; IP 67
Degree of soiling		2

Mechanical data

Weight	[g]	136.5
Housing		rectangular
Type of mounting		Mounting on DIN rail; quick mounting; AS-i flat cable connection; (TH35 (EN 60715))
Dimensions	[mm]	109 x 85 x 52
Material		housing: PA 6.6; AirBox housing: PA 6; sealing: TPE; sealing rings: NBR
Pneumatic system		1 x 5/2-way slide valve (free from overlapping); bistable
Operating pressure range		3...8 bar 43.5...116 psi
Air flow at 6/5 bar	[l/min]	500
Permissible compressed air		non-lubricated compressed air class 6-3-1; lubricated compressed air class 6-3-4
Manual override		pressing/releasing or pressing/turning/locking
Tube fittings		8 mm

AL5251



IO-Link AirBox with quick mounting technology

IOL AirBox 1x5/2 bist. 4x2DI

Exhaust exhaust can be discharged through tube connection

Displays / operating elements

Display	Power	LED, green
	errors	LED, red
	Function	LED, yellow

Accessories

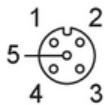
Items supplied	lower part
Accessories (optional)	Mounting plate:, E74999
	Module lower part:, E75000
	Protective cap: M12, E73004
	sealing plug:, E75231
	Silencer:, E75232
	Push-in L-fitting:, E75228
Push-in T-fitting:, E75227	

Remarks

Remarks	If not pneumatically operated, E75231 sealing plug must be inserted.
	Avoid ingress of dirt and dust.
	Do not connect any of the following points to an external potential: L-, L+, I-1, I-2, I-3, I-4
	Please see the notes on compressed air and EMC/ESD under "Downloads"
Pack quantity	1 pcs.

Electrical connection - Socket

Connector: 4 x M12; coding: A; Contacts: 5



Digital input X1.0...X1.3

1	L+
2	IN2 DI2
3	L-
4	IN1 DI1
5	n.c.

Electrical connection - plug

Connector: 1 x M12; coding: A; Contacts: 4



voltage supply X1

1	L+
2	n.c.
3	L-
4	IO-Link

AL5251

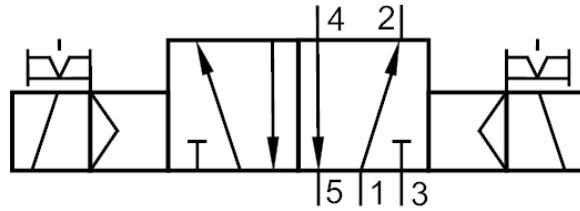


IO-Link AirBox with quick mounting technology

IOL AirBox 1x5/2 bist. 4x2DI

Diagrams and graphs

Pneumatic symbol



1 x 5/2-way slide valve (free from overlapping); bistable