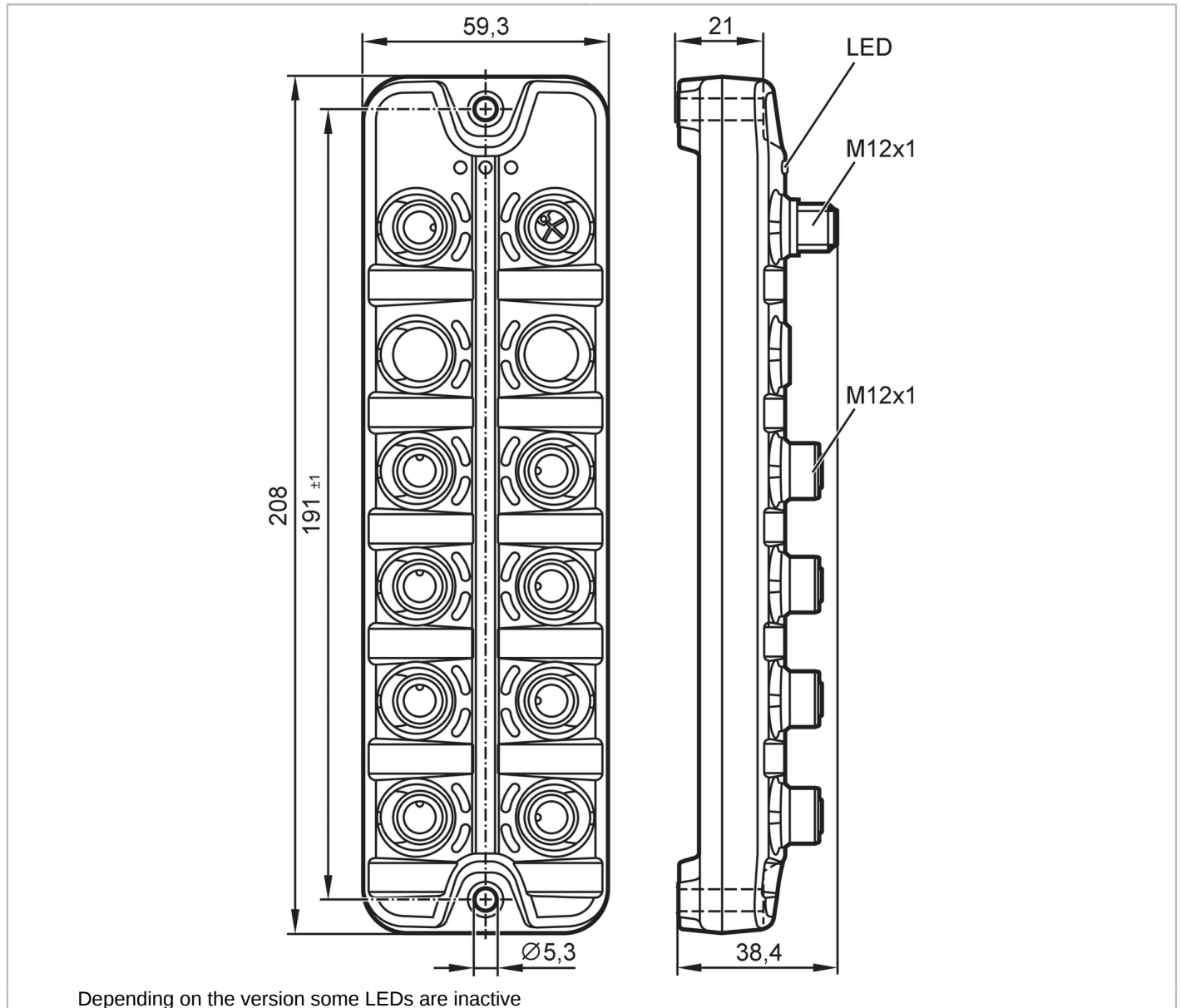


# AL2507



## IO-Link input/output module

IOL MOD PL 8XMP/DX E D M12 IP69K



Electrical data	
Operating voltage [V]	18...30 DC
Current consumption [mA]	50; (US)
Protection class	III
Additional voltage supply [V]	18...30 DC; (UA)
Max. current consumption from additional supply [mA]	16000; (UA)
Inputs / outputs	
Total number of inputs and outputs	16
Number of inputs and outputs	Number of digital inputs: 16; Number of analog inputs: 8; Number of frequency inputs: 2; Number of digital outputs: 16

# AL2507



## IO-Link input/output module

IOL MOD PL 8XMP/DX E D M12 IP69K

Inputs		
Number of frequency inputs	2	
Number of digital inputs	16; (configurable)	
Input circuit of digital inputs	PNP; (type 3 (IEC 61131-2))	
Sensor supply of the inputs	AUX (UA)	
Voltage supply [V]	18...30	
Input current High [mA]	2...15	
Input current low [mA]	0...1.5	
Switching level high [V]	11...28	
Switching level low [V]	0...5	
Number of analog inputs	8; (configurable current/voltage input)	
Analog input (current) [mA]	4...20	
Analog input (voltage) [V]	0...10	
Resolution of analog input	16 Bit	
Precision analog input [%]	0,3	
Outputs		
Number of digital outputs	16; (configurable)	
Max. current load per output [mA]	2000	
Max. current load outputs total [A]	16	
Short-circuit protection	yes	
Actuator supply outputs	AUX (UA)	
Number of PWM outputs	8; (acyclic enhanced modus)	
Number of PWM-I outputs	2; (acyclic enhanced modus)	
PMW/PWM-I output	max. current PWM-I output [mA]	2000
	available factors for the controller [PID]	Kp, Ki, Kd
	currently requested resolution [mA]	1
	Accuracy PWM-I Ausgang [%]	2,2
	range of the PWM output pulse/pause ratio [%]	0...1000
	switch-on time resolution ‰	1
	PWM/PWM-I frequency range [Hz]	20...1000
	number of configurable frequencies	2
	number of PWM outputs with optional dither	8
	dither level [%]	1...250
dither number	1...20	
Measuring/setting range		
Sampling rate [Hz]	0...3000	
Interfaces		
Communication interface	IO-Link	
Transmission type	COM3 (230,4 kBaud)	
IO-Link revision	1.1	
SDCI standard	IEC 61131-9	
SIO mode	no	
Required master port class	A	

# AL2507



## IO-Link input/output module

IOL MOD PL 8XMP/DX E D M12 IP69K

Min. process cycle time	[ms]	4
Supported DeviceIDs	<b>Type of operation</b>	<b>DeviceID</b>
	Acyclic enhanced parametrisation	1449
	Acyclic parametrisation	1316
	Cyclic parametrisation	1315
Note	Parameter setting can be changed from "cyclic" to "acyclic" and "acyclic enhanced" For further information please see the IODD PDF file at "Downloads"	
<b>Acyclic enhanced parametrisation</b>		
Profiles	Common - I&D	Identification and Diagnosis
	Function	Multiple switching signal
<b>Acyclic parametrisation</b>		
Profiles	Common - I&D	Identification and Diagnosis
<b>Cyclic parametrisation</b>		
Profiles	Common - I&D	Identification and Diagnosis
<b>Operating conditions</b>		
Ambient temperature	[°C]	-25...60
Storage temperature	[°C]	-25...70
Max. relative air humidity	[%]	90
Max. height above sea level	[m]	2000
Protection	IP 65; IP 67; IP 69K; (operation with stainless steel protective caps: IP 69K)	
Protection rating (NEMA 250)	6P	
Degree of soiling	2	
Chemical media	ISO 16750-5	HLP, CC, DB, DC, DD, CA
	NEMA 250 5.13.1	AA
<b>Tests / approvals</b>		
EMC	EN 61000-6-2	
	EN 61000-6-3	
	IEC 61131-9	
Shock resistance	DIN EN 60068-2-27	
Vibration resistance	DIN EN 60068-2-64	
	DIN EN 60068-2-6	
MTTF	[years]	59
<b>Mechanical data</b>		
Weight	[g]	410.9
Dimensions	[mm]	26 x 59.3 x 208
Material	housing: PA grey; Socket: stainless steel (1.4404 / 316L)	
Sealing material	EPDM	
Tightening torque	[Nm]	< 0.8
<b>Displays / operating elements</b>		
Display	Power	4x LED, green
	fault	3 x LED, red
	Function	16x LED, yellow
<b>Accessories</b>		
Accessories (optional)	protective cap for M12 sockets	



## IO-Link input/output module

IOL MOD PL 8XMP/DX E D M12 IP69K

Remarks	
Remarks	Using the device within a system with requirements for functional safety is possible by deactivating the actuator voltage UA without interaction. For further information on functional safety, please refer to the operating instructions supplement under "Downloads".
Pack quantity	1 pcs.

## Electrical connection - AUX

Connector: 1 x M12; coding: L; Contacts: 5



## X31

1:	n.c.
2:	L- (UA)
3:	n.c.
4:	L+ (UA)
5:	FE

## Electrical connection - IO-Link

Connector: 1 x M12; coding: A; Contacts: 4

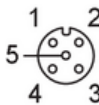


## X1

1:	L+ (US)
2:	n.c.
3:	L- (US)
4:	DATA IO-Link

## Electrical connection - inputs / outputs

Connector: 8 x M12; coding: A; Contacts: 4; sealing: EPDM



## X1.0...X1.7

1:	L+ (UA) Sensor supply
2:	MP2 DI2/DO2
3:	L- (UA) Sensor supply
4:	MP1 DI1/DO1
5:	FE