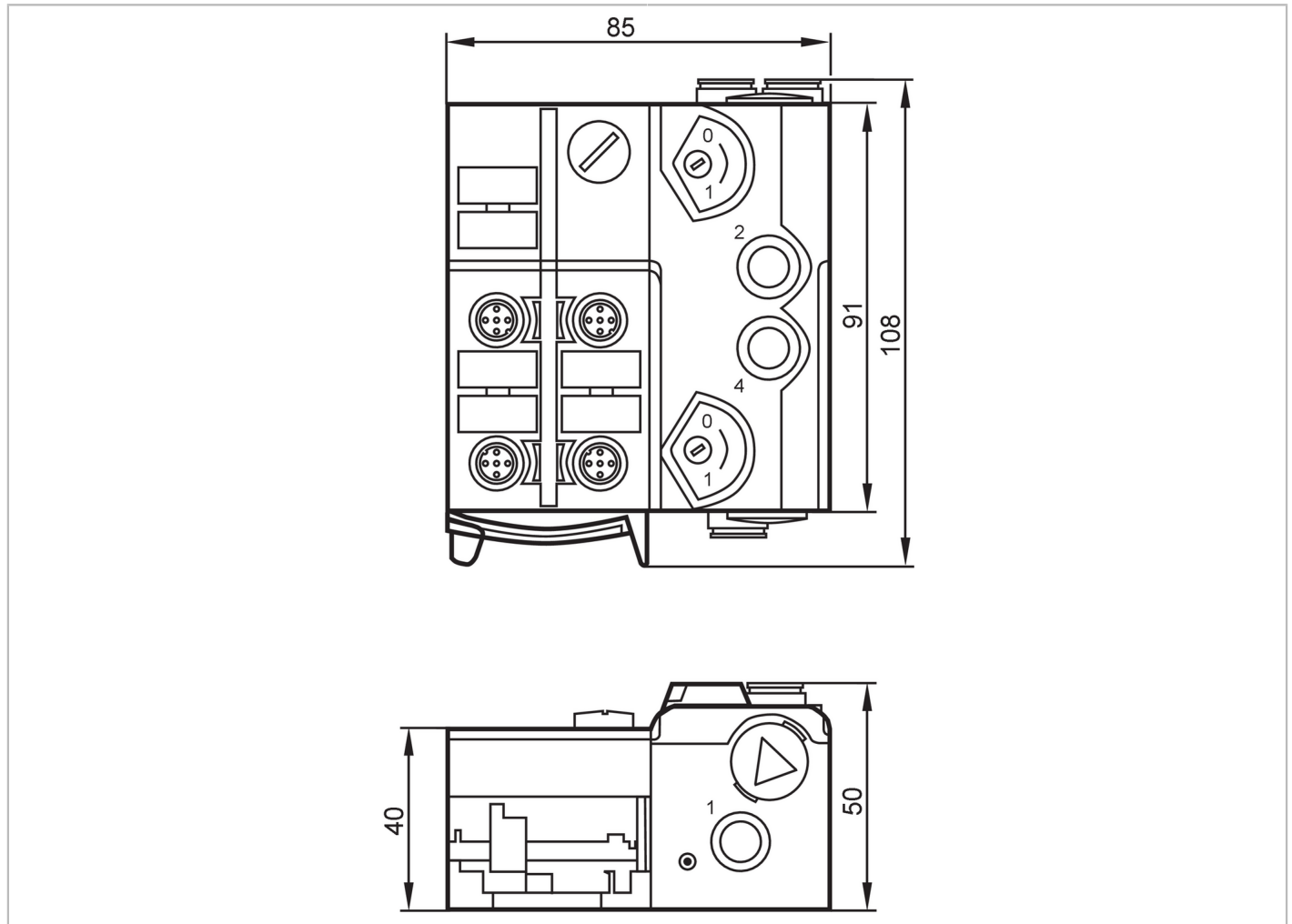


AC5243



AS-Interface Airbox with quick mounting technology

AirBox 2x3/2 4DI-Y IP67 AUX



Application	
Design	housing for DIN rail mounting
Application	field installation
Medium temperature	[°C] -10...50
Electrical data	
Operating voltage	[V] 26.5...31.6 DC
Max. current consumption from AS-i	[mA] 280
Additional voltage supply	[V] 18...30 DC; (to PELV)
Additional voltage supply	required
Max. current consumption from additional supply	[mA] 10
Integrated watchdog	yes
Inputs / outputs	
Number of inputs and outputs	Number of digital inputs: 4; Number of pneumatic outputs: 2
Inputs	
Number of digital inputs	4

AC5243



AS-Interface Airbox with quick mounting technology

AirBox 2x3/2 4DI-Y IP67 AUX

Input circuit of digital inputs	PNP
Sensor supply of the inputs	AS-i
Power supply [V]	20...30; (via flat cable)
Max. total current rating of inputs [mA]	200
Input current High [mA]	6...10
Input current Low [mA]	0...2
Switching level high [V]	> 11
Digital inputs protected against short circuits	yes

Outputs

Number of pneumatic outputs	2; (supply: external 24 V power supply)
Actuator supply outputs	AUX

Operating conditions

Ambient temperature [°C]	-10...55
Protection	IP 65; IP 67

Tests / approvals

EMC	EN 50295
	IEC 61000-6-2
MTTF [years]	237

AS-i classification

AS-i version	2.11; 3.0				
AS-i addressing	addressing socket				
Extended addressing mode	yes				
AS-i master profile	M2; M3; M4				
AS-i profile	S-7.A.E				
AS-i I/O configuration [hex]	7				
AS-i ID code [hex]	A.E				
Assignment of the data bits	data bit	D0	D1	D2	D3
	input	1	2	3	4
	socket	I-1/2	I-1/2 I-2	I-3/4	I-3/4 I-4
	pin	4	2 4	4	2 4
	pneumatic output	2	4	-	-

Mechanical data

Weight [g]	381.5		
Housing	rectangular		
Type of mounting	quick mounting; AS-i flat cables directly connectable; mounting on DIN rail; (TH35 (EN 60715))		
Dimensions [mm]	108 x 85 x 50		
Materials	PA; POM; piercing contacts: CuSn6 nickel-plated and tin-plated		
Pneumatic system	2 x 3/2-way slide valves (free from overlapping)		
Operating pressure range	2...8 bar	0.2...0.8 MPa	29...116 psi
Air flow at 6/5 bar [l/min]	500		
Permissible compressed air	non-lubricated compressed air class 6-3-1; lubricated compressed air class 6-3-4		
Manual override	pressing/releasing or pressing/turning/locking		

AC5243



AS-Interface Airbox with quick mounting technology

AirBox 2x3/2 4DI-Y IP67 AUX

Tube fittings	8 mm	
Exhaust	exhaust can be discharged through tube connection	
Displays / operating elements		
Display	operation	LED, green
	errors	LED, red
	function	LED, yellow
Electrical connection		
Module connection	Flat cables	
Accessories		
Items supplied	lower part	
Accessories (optional)	Mounting plate:, E74999	
	Module lower part:, E75000	
	Protective cap: M12, E73004	
	sealing plugs:, E75231	
	silencer:, E75232	
	Push-in L-fitting:, E75228	
Push-in T-fitting:, E75227		
Remarks		
Remarks	If not pneumatically operated, E75231 sealing plug must be inserted.	
	Avoid ingress of dirt and dust.	
	Do not connect any of the following points to an external potential:	
	L-, L+, I-1, I-2, I-3, I-4	
	The connections are electrically connected with the AS-i cable.	
	Please see the notes on compressed air and EMC/ESD under "Downloads"	
Pack quantity	1 pcs.	



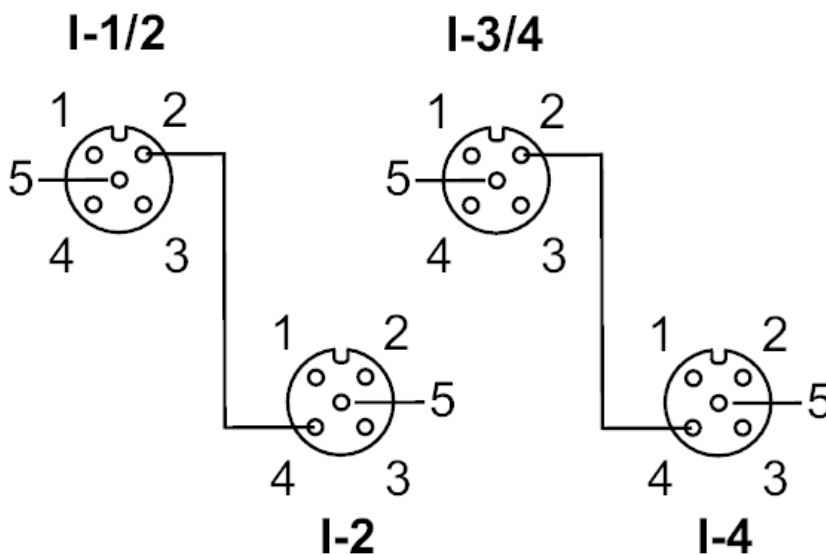
AS-Interface Airbox with quick mounting technology

AirBox 2x3/2 4DI-Y IP67 AUX

Electrical connection

quick mounting technology for AS-i flat cable: ; three orientations possible

Connection



Connector: M12

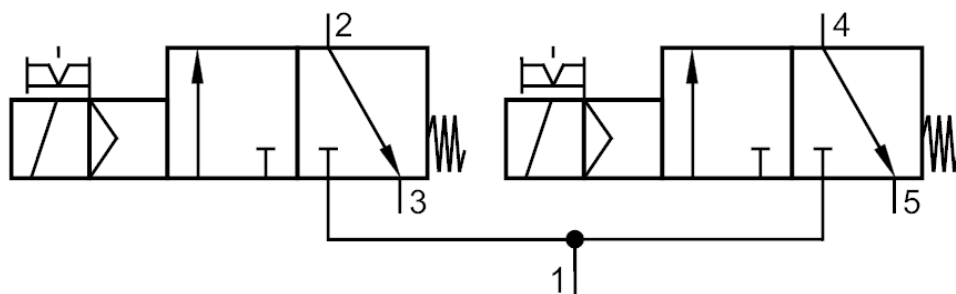
	Inputs
	socket I-1/2
1	Sensor supply L+
2	data input 2
3	Sensor supply L-
4	data input 1
5	not used
	socket I-2
1	Sensor supply L+
2	not used
3	Sensor supply L-
4	data input 2
5	not used
	socket I-3/4
1	power supply L+
2	data input 4
3	Sensor supply L-
4	data input 3
5	not used
	socket I-4
1	Sensor supply L+
2	not used
3	Sensor supply L-
4	data input 4
5	not used

AS-Interface Airbox with quick mounting technology

AirBox 2x3/2 4DI-Y IP67 AUX

Diagrams and graphs

Pneumatic symbol



2 x 3/2-way slide valves (free from overlapping)