

AC1015



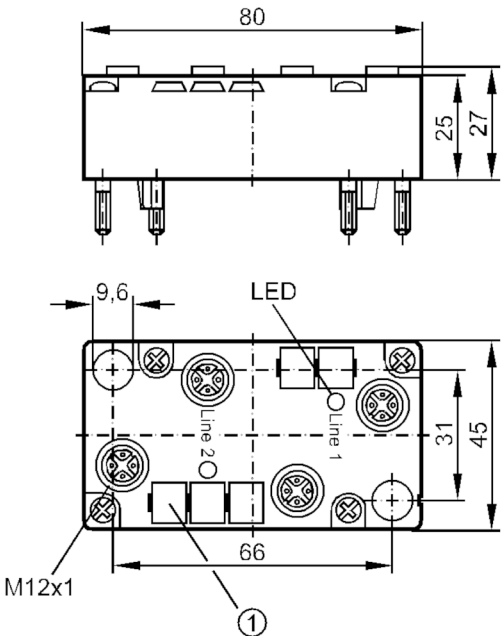
AS-Interface repeater

Repeater 6GK1 210-0SA00 IP67

Article no longer available - archive entry

Alternative articles: AC2215

When selecting an alternative article and accessories please note that technical data may differ!



Application		
Application	Extension of the AS-i network by another 100 m	
Electrical data		
Current consumption	[mA]	2
Outputs		
Electrical design	AS-i	
Electrically separated	yes	
Operating conditions		
Ambient temperature	[°C]	0...60
Protection	IP 67	
Displays / operating elements		
Display	Power	2 x LED, green
Remarks		
Remarks	The AS-i extender takes no slave address.	
	The total number of slaves per master string remains unchanged.	
	No parameter setting necessary.	
Pack quantity	1 pcs.	

AC1015

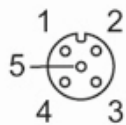


AS-Interface repeater

Repeater 6GK1 210-0SA00 IP67

Electrical connection

Connector: M12; coding: A



Connection