

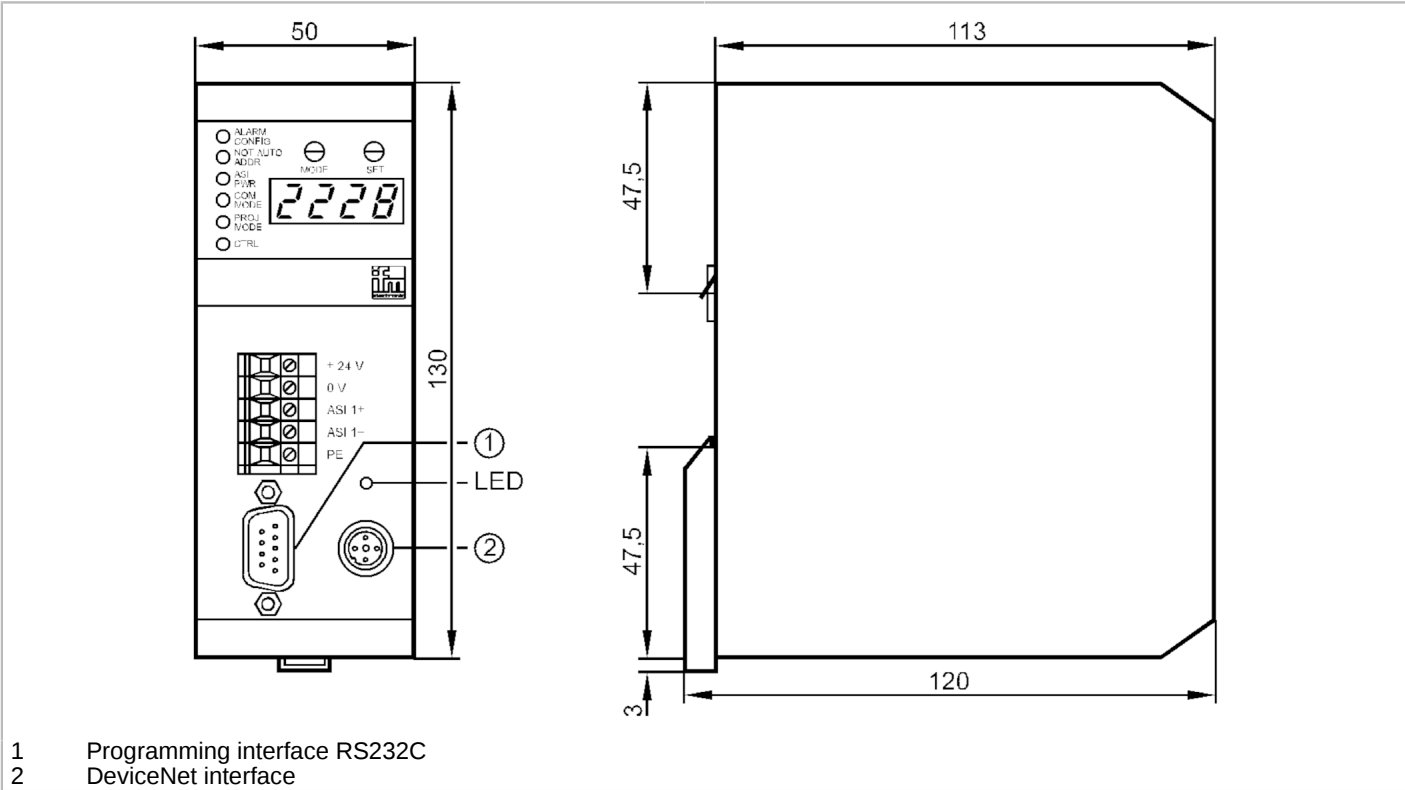


AS-Interface DeviceNet gateway with PLC

CONTR/1MSTR/1RS232C/1DN

Article no longer available - archive entry

Alternative articles: AC1318
When selecting an alternative article and accessories please note that technical data may differ!



Application	
Application	Use as minicontroller and gateway
Electrical data	
Operating voltage	[V] 22...30 DC; (24 DC ; to PELV)
Insulation rating	[V] 500
Max. current consumption from AS-i	[mA] 80
Max. power consumption	[VA] 10
Electrical separation	yes
Outputs	
Electrical design	AS-i
Interfaces	
Communication interface	RS232
RS232	
Number of R232 interfaces	1
Transmission rate	4800...62400 Baud
Type of connector	SUB-D
Usage type	Programming

AC1008



AS-Interface DeviceNet gateway with PLC

CONTR/1MSTR/1RS232C/1DN

Operating conditions		
Ambient temperature	[°C]	0...60
Storage temperature	[°C]	-20...70
Max. relative air humidity	[%]	95
Protection		IP 20
AS-i classification		
AS-i master profile		M1
AS-i certificate		22504
Mechanical data		
Housing		housing for DIN rail mounting
Material		aluminum
Displays / operating elements		
Display	function check	2 x LED, red
		2 x LED, green
		2 x LED, yellow
Remarks		
Pack quantity		1 pcs.
Electrical connection		
screw terminals: 5 x		
Connection		
<div><div><div>5</div><div>4</div><div>3</div><div>2</div><div>1</div></div><div><div>+ 24 V</div><div>0 V</div><div>AS-i 1+</div><div>AS-i 1–</div><div>PE</div></div></div>		