

AC1004



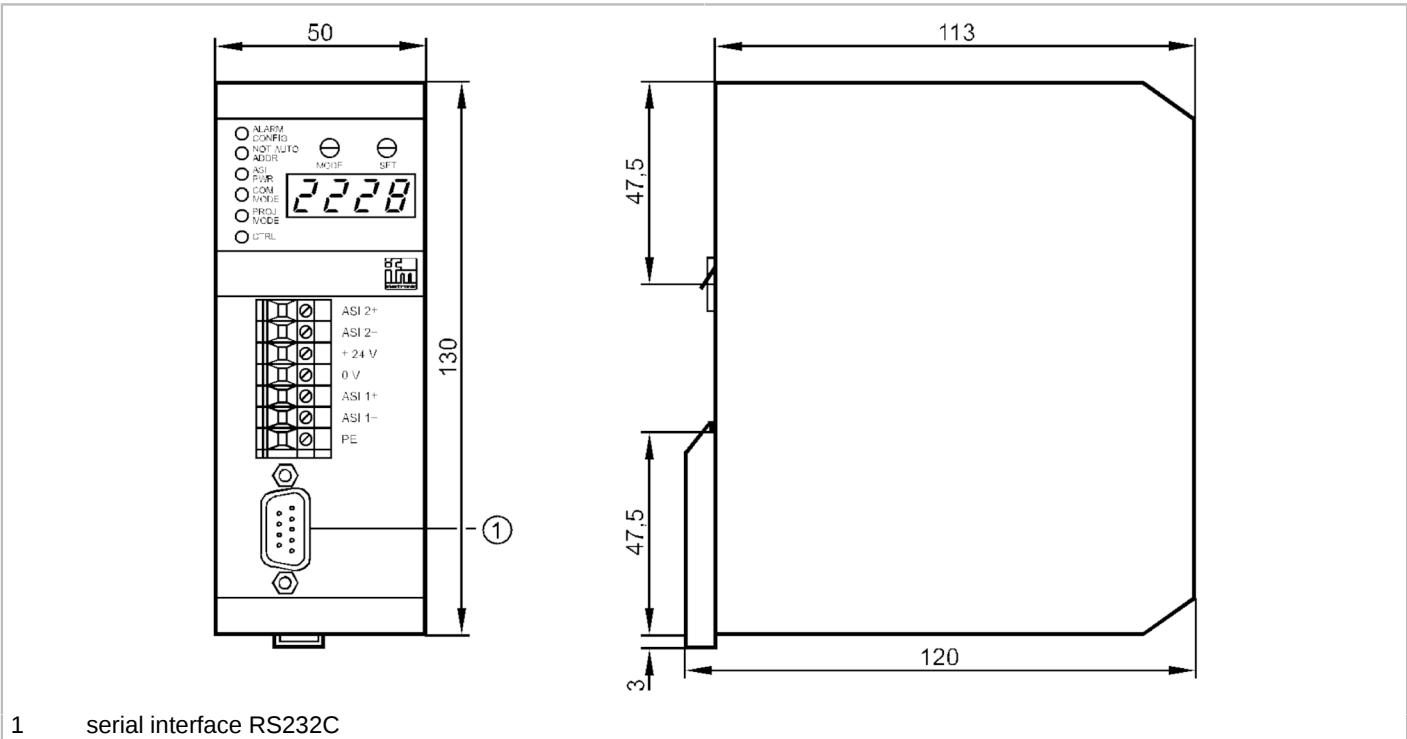
AS-Interface PLC

CONTR 2MSTR 1RS232C

Article no longer available - archive entry

Alternative articles: AC1334

When selecting an alternative article and accessories please note that technical data may differ!



1 serial interface RS232C



Application	
Application	Mini-controller for signal preprocessing
Electrical data	
Operating voltage	[V] 22...30 DC; (24 DC ; to PELV)
Insulation rating	[V] 500
Max. current consumption from AS-i	[mA] 80
Max. power consumption	[VA] 10
Electrical separation	yes
Outputs	
Electrical design	AS-i
Interfaces	
Communication interface	RS232
RS232	
Number of R232 interfaces	1
Transmission rate	4800...62400 Baud
Type of connector	SUB-D
Usage type	Programming

AC1004



AS-Interface PLC

CONTR 2MSTR 1RS232C

Operating conditions		
Ambient temperature	[°C]	0...60
Storage temperature	[°C]	-20...70
Max. relative air humidity	[%]	95
Protection		IP 20
Tests / approvals		
Shock/vibration resistance		< 15 g (11ms) / < 55 Hz (0.5mm)
AS-i classification		
AS-i master profile		M1
AS-i certificate		22502
Mechanical data		
Housing		housing for DIN rail mounting
Material		aluminum
Displays / operating elements		
Display	function check	2 x LED, red
		2 x LED, green
		2 x LED, yellow
Remarks		
Pack quantity		1 pcs.
Electrical connection		
screw terminals: 7 x		
Connection		

7	AS-i 2+
6	AS-i 2-
5	+ 24 V
4	0 V
3	AS-i 1+
2	AS-i 1-
1	PE