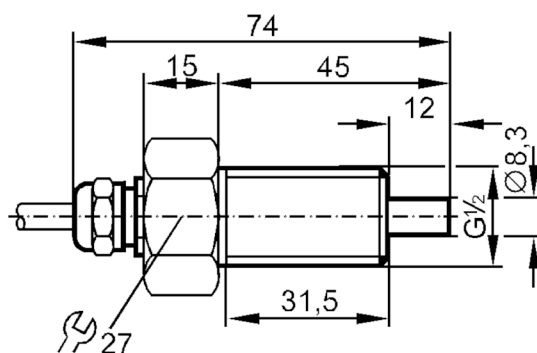


## Flow sensor for connection to an evaluation unit

STR12ABBE1

Article no longer available - archive entry



## Product characteristics

Process connection	G 1/2 external thread
--------------------	-----------------------

## Application

Application	Ex zone 1
Medium temperature [°C]	-25...80
Pressure rating [bar]	30

## Liquids

Application	Ex zone 1
Medium temperature [°C]	-25...80

## Gases

Medium temperature [°C]	-25...80
-------------------------	----------

## Electrical data

Connection to control monitor	VS 0100 Ex
-------------------------------	------------

## Measuring/setting range

## Liquids

Setting range [cm/s]	3...300
Greatest sensitivity [cm/s]	3...60

## Gases

Setting range [cm/s]	200...2000
Greatest sensitivity [cm/s]	100...800

## Accuracy / deviations

Temperature gradient [K/min]	15
------------------------------	----

## Response times

Response time [s]	1...10
-------------------	--------

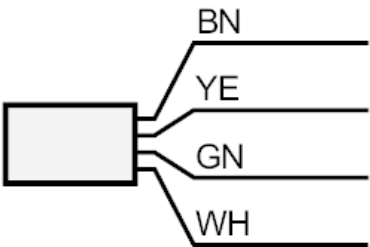
# ST3210



## Flow sensor for connection to an evaluation unit

STR12ABBE1

Liquids		
Response time	[s]	1...10
Gases		
Response time	[s]	1...10
Operating conditions		
Protection		IP 67
Mechanical data		
Housing		threaded type
Materials		stainless steel (1.4571/316Ti )
Process connection		G 1/2 external thread
Remarks		
Pack quantity		1 pcs.
Electrical connection		
Cable: 2 m, Silflex-PUR; Maximum cable length: 100 m; 4 x 0.34 mm²		
Connection		



	Core colours :
BN =	brown
GN =	green
WH =	white
YE =	yellow