

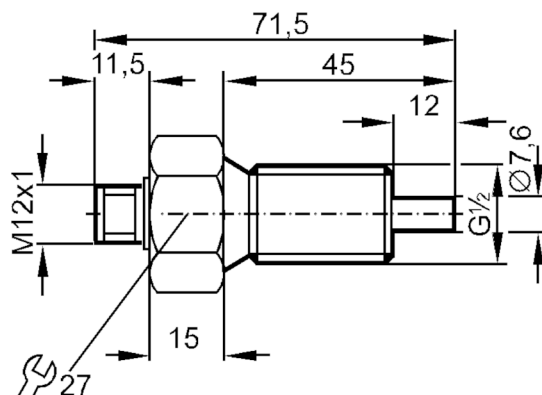
# ST3204



## Flow sensor for connection to an evaluation unit

STR12ABB/US-100-H

Article no longer available - archive entry



### Product characteristics

Process connection	G 1/2 external thread
--------------------	-----------------------

### Application

Application	high-temperature range
Media	Liquids; Gases
Medium temperature [°C]	-25...80
Pressure rating [bar]	30

### Liquids

Application	high-temperature range
Medium temperature [°C]	-25...80

### Gases

Medium temperature [°C]	-25...80
-------------------------	----------

### Electrical data

Connection to control monitor	VS 0100
-------------------------------	---------

### Measuring/setting range

#### Liquids

Setting range [cm/s]	3...300
Greatest sensitivity [cm/s]	3...60

#### Gases

Setting range [cm/s]	5...15
----------------------	--------

### Accuracy / deviations

Temperature gradient [K/min]	15
------------------------------	----

### Response times

Response time [s]	1...10
-------------------	--------

# ST3204



## Flow sensor for connection to an evaluation unit

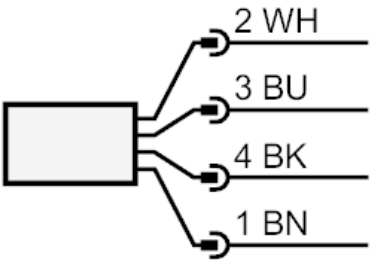
STR12ABB/US-100-H

Liquids		
Response time	[s]	1...10
Gases		
Response time	[s]	1...10
Operating conditions		
Protection		IP 67
Mechanical data		
Housing		threaded type
Materials		stainless steel (1.4571/316Ti )
Process connection		G 1/2 external thread
Remarks		
Pack quantity		1 pcs.
Electrical connection		

Connector: 1 x M12; coding: A; Maximum cable length: 100 m



### Connection



BN =                    Core colours :  
WH =                    brown  
YE =                    white  
GN =                    yellow  
                             green