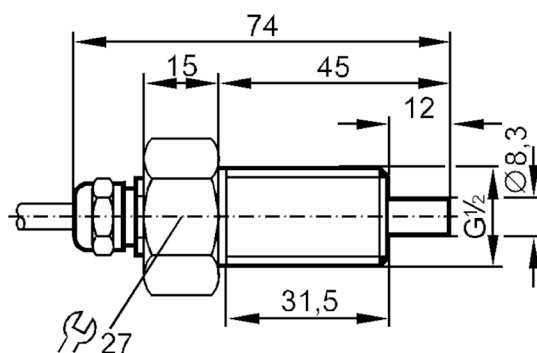


Flow sensor for connection to an evaluation unit

STR12AACE1

Article no longer available - archive entry



Product characteristics

Process connection	G 1/2 external thread
--------------------	-----------------------

Application

Application	Ex zone 1
Medium temperature [°C]	-25...80
Pressure rating [bar]	5

Liquids

Application	Ex zone 1
Medium temperature [°C]	-25...80

Electrical data

Connection to control monitor	VS 0100 Ex
-------------------------------	------------

Measuring/setting range

Liquids

Setting range [cm/s]	3...300
Greatest sensitivity [cm/s]	3...60

Accuracy / deviations

Temperature gradient [K/min]	7
------------------------------	---

Response times

Response time [s]	2...20
-------------------	--------

Liquids

Response time [s]	2...20
-------------------	--------

Operating conditions

Protection	IP 67
------------	-------

ST3406



Flow sensor for connection to an evaluation unit

STR12AACE1

Mechanical data	
Housing	threaded type
Materials	PTFE
Process connection	G 1/2 external thread

Remarks	
Pack quantity	1 pcs.

Electrical connection	
Cable: 2 m, Silflex-PUR; Maximum cable length: 100 m; 4 x 0.25 mm²	

Connection

The diagram shows a rectangular sensor housing on the left. Four wires extend from the right side of the housing. From top to bottom, the wires are labeled: BN, YE, GN, and WH. Each label is placed just before the wire terminates in a horizontal line.

BN =

GN =

WH =

YE =

Core colours :

brown

green

white

yellow