

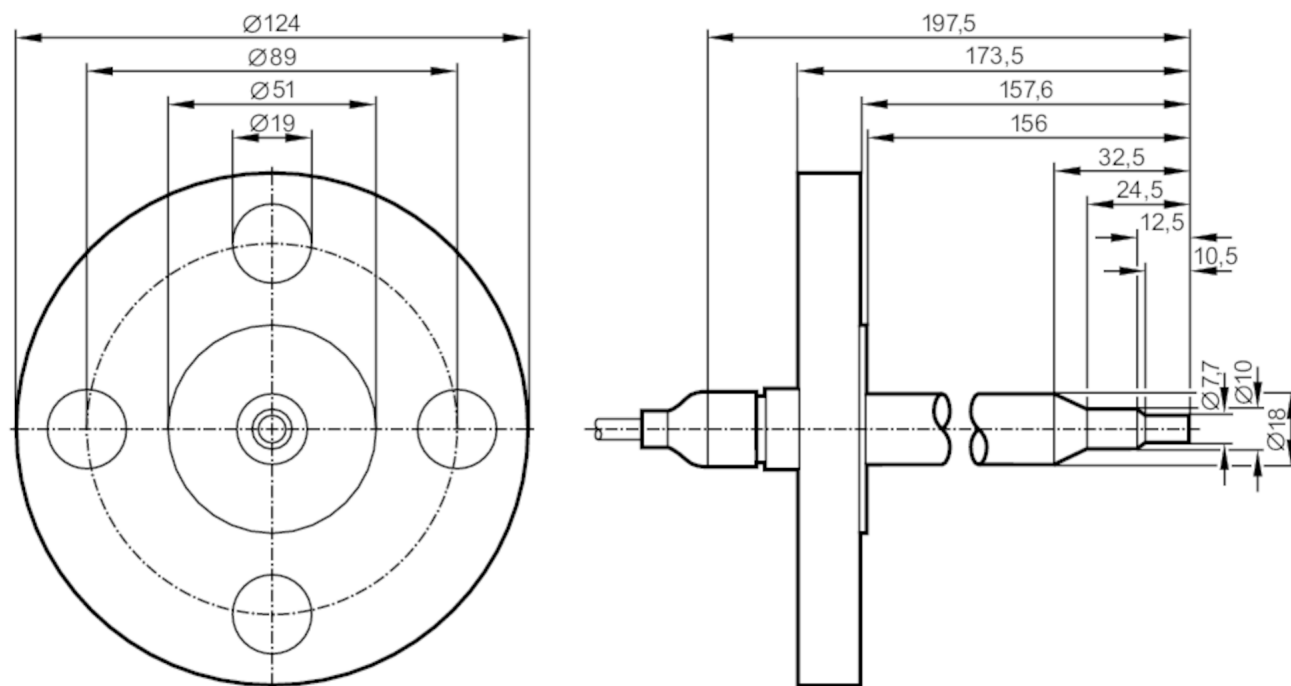
# SF521A



## Flow sensor for connection to an evaluation unit

SFG18ABB/2G /6M

Article no longer available - archive entry



### Product characteristics

Probe length L	[mm]	156
Process connection		ANSIB 16.5 (1 in; 300 lb/sq.in)

### Application

Application		high-temperature range
Media		Liquids; Gases
Medium temperature	[°C]	-20...70
Pressure rating	[bar]	30

### Electrical data

Connection to control monitor		VS2000 Exi (PTB 01 ATEX 2075)
-------------------------------	--	-------------------------------

### Measuring/setting range

Probe length L	[mm]	156
Liquids		
Setting range	[cm/s]	3...300
Greatest sensitivity	[cm/s]	3...60
Gases		
Setting range	[cm/s]	200...2000
Greatest sensitivity	[cm/s]	200...800

### Accuracy / deviations

Temperature gradient	[K/min]	15
----------------------	---------	----

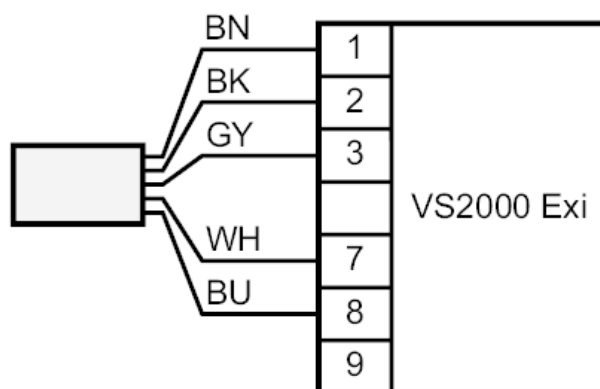
# SF521A



## Flow sensor for connection to an evaluation unit

SFG18ABB/2G /6M

Response times		
Response time	[s]	1...10
Operating conditions		
Ambient temperature	[°C]	-20...70
Protection		IP 67
Tests / approvals		
ATEX marking	Ex II 2G Ex ia IIC T4 Gb	
Shock resistance	DIN IEC 68-2-27	40 g (11 ms)
Vibration resistance	DIN IEC 68-2-6	10 g (55...2000 Hz)
Mechanical data		
Weight	[g]	2.665
Housing		cylindrical
Dimensions	[mm]	Ø 18
Materials		stainless steel (1.4404 / 316L)
Materials (wetted parts)		stainless steel (1.4404 / 316L)
Process connection		ANSIB 16.5 (1 in; 300 lb/sq.in)
Remarks		
Remarks	In principle, the type test according to 94/9/EC (ATEX) only takes atmospheric conditions into account (0.8...1.1 bar).	
	For pressures outside this range use must be assessed and approved by the user.	
	Adhere to the operating instructions and the type test certificate.	
Pack quantity		1 pcs.
Electrical connection		
Cable: 6 m, TPE-S; Maximum cable length: 100 m; 5 x 0.34 mm²		
Connection		



Core colours :	
BN =	brown
BU =	blue
BK =	black
WH =	white
GY =	grey