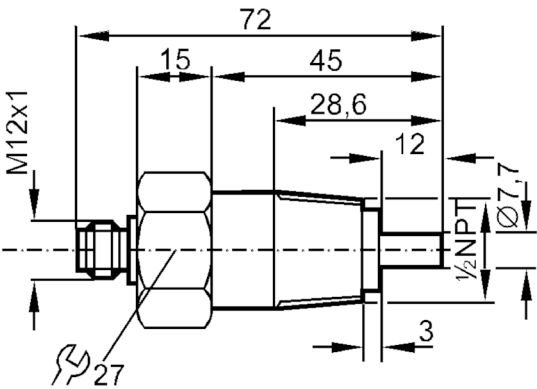




Flow sensor for connection to an evaluation unit

SFN12ABA/US-100/CSA

Article no longer available - archive entry



Product characteristics		
Process connection		1/2" NPT
Application		
Application		high-temperature range
Media		Liquids; Gases
Medium temperature	[°C]	-25...80
Pressure rating	[bar]	30
Liquids		
Application		high-temperature range
Medium temperature	[°C]	-25...80
Gases		
Medium temperature	[°C]	-25...80
Electrical data		
Connection to control monitor		VS 0200
Measuring/setting range		
Liquids		
Setting range	[cm/s]	3...300
Greatest sensitivity	[cm/s]	3...60
Gases		
Setting range	[cm/s]	200...2000
Greatest sensitivity	[cm/s]	200...800

# SF3011

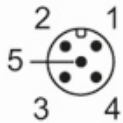


## Flow sensor for connection to an evaluation unit

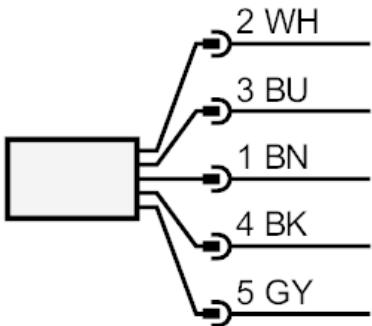
SFN12ABA/US-100/CSA

Accuracy / deviations		
Temperature gradient	[K/min]	15
Response times		
Response time	[s]	1...10
Liquids		
Response time	[s]	1...10
Gases		
Response time	[s]	1...10
Operating conditions		
Protection		IP 67
Mechanical data		
Housing		threaded type
Materials		stainless steel (1.4305 / 303)
Materials (wetted parts)		stainless steel (1.4305 / 303)
Process connection		1/2" NPT
Remarks		
Pack quantity		1 pcs.
Electrical connection		

Connector: 1 x M12; coding: A; Maximum cable length: 100 m



### Connection



Core colours :  
BN = brown  
BU = blue  
BK = black  
WH = white  
GY = grey