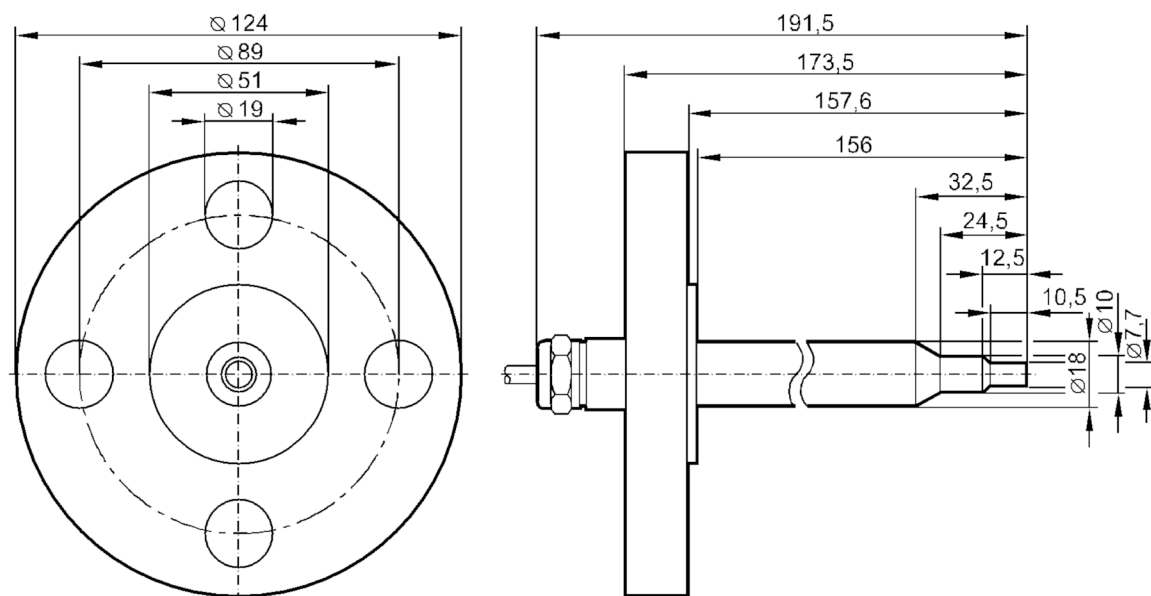


Flow sensor for connection to an evaluation unit

SFG18ABBE1

Article no longer available - archive entry



Product characteristics

Process connection	ANSIB 16.5 (1 in; 300 lb/sq.in)
--------------------	---------------------------------

Application

Application	Ex zone 1
-------------	-----------

Medium temperature	[°C]	-25...80
--------------------	------	----------

Pressure rating	[bar]	30
-----------------	-------	----

Liquids

Application	Ex zone 1
-------------	-----------

Medium temperature	[°C]	-25...80
--------------------	------	----------

Gases

Medium temperature	[°C]	-25...80
--------------------	------	----------

Electrical data

Connection to control monitor	VS 0200 Exi
-------------------------------	-------------

Measuring/setting range

Liquids

Setting range	[cm/s]	3...300
---------------	--------	---------

Greatest sensitivity	[cm/s]	3...60
----------------------	--------	--------

Gases

Setting range	[cm/s]	200...2000
---------------	--------	------------

Greatest sensitivity	[cm/s]	200...800
----------------------	--------	-----------

Accuracy / deviations

Temperature gradient	[K/min]	15
----------------------	---------	----

Response times

Response time	[s]	1...10
---------------	-----	--------

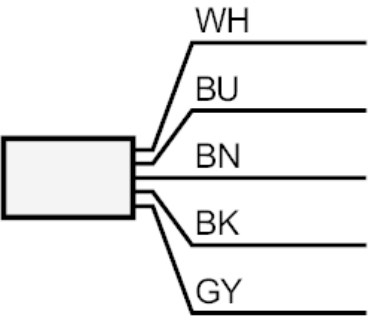
SF0713



Flow sensor for connection to an evaluation unit

SFG18ABBE1

Liquids		
Response time	[s]	1...10
Gases		
Response time	[s]	1...10
Operating conditions		
Protection		IP 67
Mechanical data		
Housing		cylindrical
Dimensions	[mm]	Ø 18
Materials		stainless steel (1.4571/316Ti)
Materials (wetted parts)		stainless steel (1.4571/316Ti)
Process connection		ANSIB 16.5 (1 in; 300 lb/sq.in)
Remarks		
Pack quantity		1 pcs.
Electrical connection		
Cable: 2 m, TPE-S; Maximum cable length: 100 m; 5 x 0.34 mm²		
Connection		



	Core colours :
BN =	brown
BU =	blue
BK =	black
WH =	white
GY =	grey